

BLOCKADE BARRIERS

Sub-Station Doors | Gas Doors | Plant Room Doors



Catalogue 2023/24

VIC 1300 800 956 | NSW 1300 878 949
www.blockadebarriers.com.au

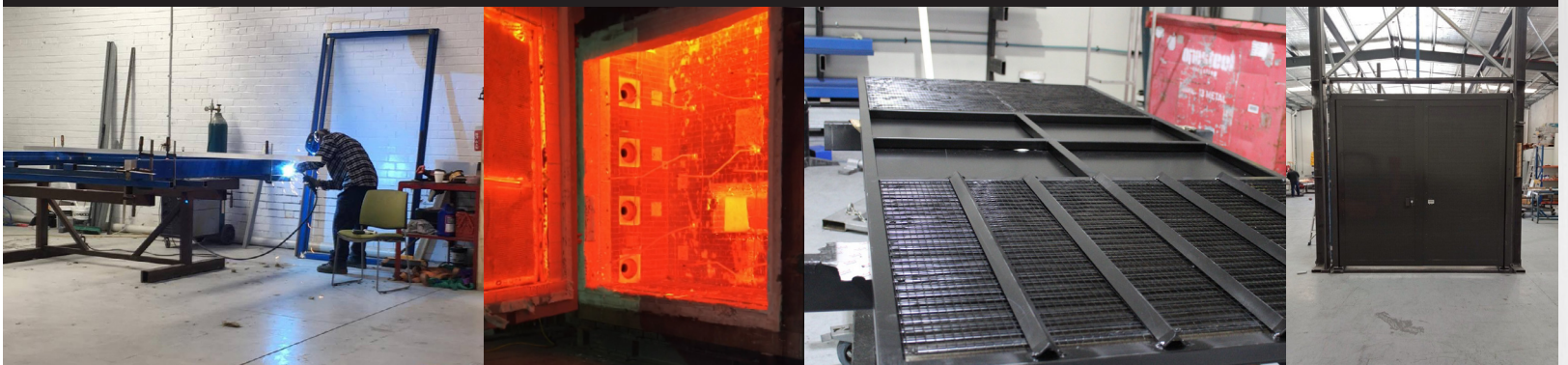


About

Established in 2016, Blockade Barriers has developed a range of Sub-Station, Plant Room and Heavy-Duty Doors which have been tested to the relevant Australian Standards. Using cutting-edge technologies, manufacturing Durasub Doors puts us at the forefront of providing Fire and Blast Protection to Facilities and Plant Equipment. Variation to the original designs include louvred vents within the door itself, or above to provide cooling air flow both naturally and mechanically.

Our Aim

To provide a specific product range that is designed and tested to achieve the highest level of performance every time. To be perceived as trustworthy, reliable and achieving recurring business is a result of customer satisfaction and confidence. We are technically sound and find Solutions for an ever-changing market through initiative. Blockade Barriers has assessed the improvement on the actual process of manufacture by investing in the latest machinery, equipment, and training. This has resulted in reduced costs and being more competitive, while never compromising the quality of our product.



SUB-STATION DOORS

DURASUB-D-EXT-01	04 - 05
DURASUB-D-EXT-01-2L	06 - 07
DURASUB-D-EXT-01-4L	08 - 09
DURASUB-D-EXT-01-6L	10 - 11
DURASUB-S-EXT-01	12 - 13
DURASUB-D-EXT-02	14 - 15
DURASUB-D-EXT-02-2L	16 - 17
DURASUB-D-EXT-02-4L	18 - 19
DURASUB-D-EXT-02-6L	20 - 21
INSUB-EXT-T-01	22 - 23
INSUB-EXT-D-01	24 - 25
INSUB-EXT-S-01	26 - 27
INSUB-EXT-T-01-FR	28 - 29
INSUB-EXT-D-01-FR	30 - 31
INSUB-EXT-S-01-FR	32 - 33

GAS DOORS

GD-EXT-D-01	34 - 35
GD-EXT-S-01	36 - 37

HEAVY-DUTY DOOR

DURASUB-H-EXT-01	38 - 39
------------------------	---------

DUCT ENCLOSURES

DURASUB CABLE DUCT ENCLOSURE	40 - 41
------------------------------------	---------

CABLE BOXES

DURASUB CABLE BOX	42 - 43
-------------------------	---------

ACCESS HATCHES

DURASUB ACCESS HATCHES	44 - 45
------------------------------	---------

BLAST WALLS

DURASUB BLAST WALLS	46 - 47
---------------------------	---------

ICON LEGEND



FIRE



HEAT &
CORROSION



EXPLOSION
& NOISE



ELECTRICAL



GAS
& FIRE



DURASUB double doors are manufactured using a composite panel of fibre reinforced cement, mechanically bonded to punched steel sheets on both outer surfaces.

Classed as a Non-Combustible 4 hr Fire resistant Class 1 to AS1530 part 4 : 2005 Blast resistant DIN 4102 Part 2 and 3 requirements.

Approved in the Power and Energy sector, this Substation door offers durable, long-life protection for equipment and facilities.



DURASUB-D-EXT-01



FEATURES

- Fire resistance level - /240/30
- Tested AS1530.4 - 2005
- Tested AS1905.1:2015
- Impact resistant 2793 J
- Corrosion resistant
- Acoustic rated 49RW
- Moisture resistant
- Insulated panels
- 50mm thick door panels
- Unequal angle door frame
- Pressed metal door frame
- Pre-hung with hardware
- Painted or Powder-coated

HARDWARE

- Piano hinges 3mm
- TS83 Door closers
- Panic exit device
- 2-way extension rods
- Night latch and handles
- Sequence selector
- Extended hinges to allow for Cladding

CLEAR OPENING SIZES

- Min – 1580mm x 2000mm
- Max – 2500mm x 2500mm

STRUCTURAL WALL THICKNESS

- Any thickness

04



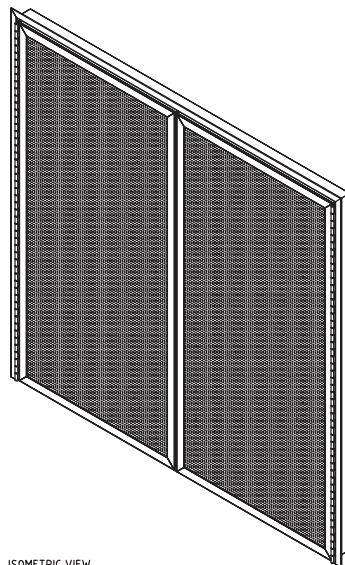
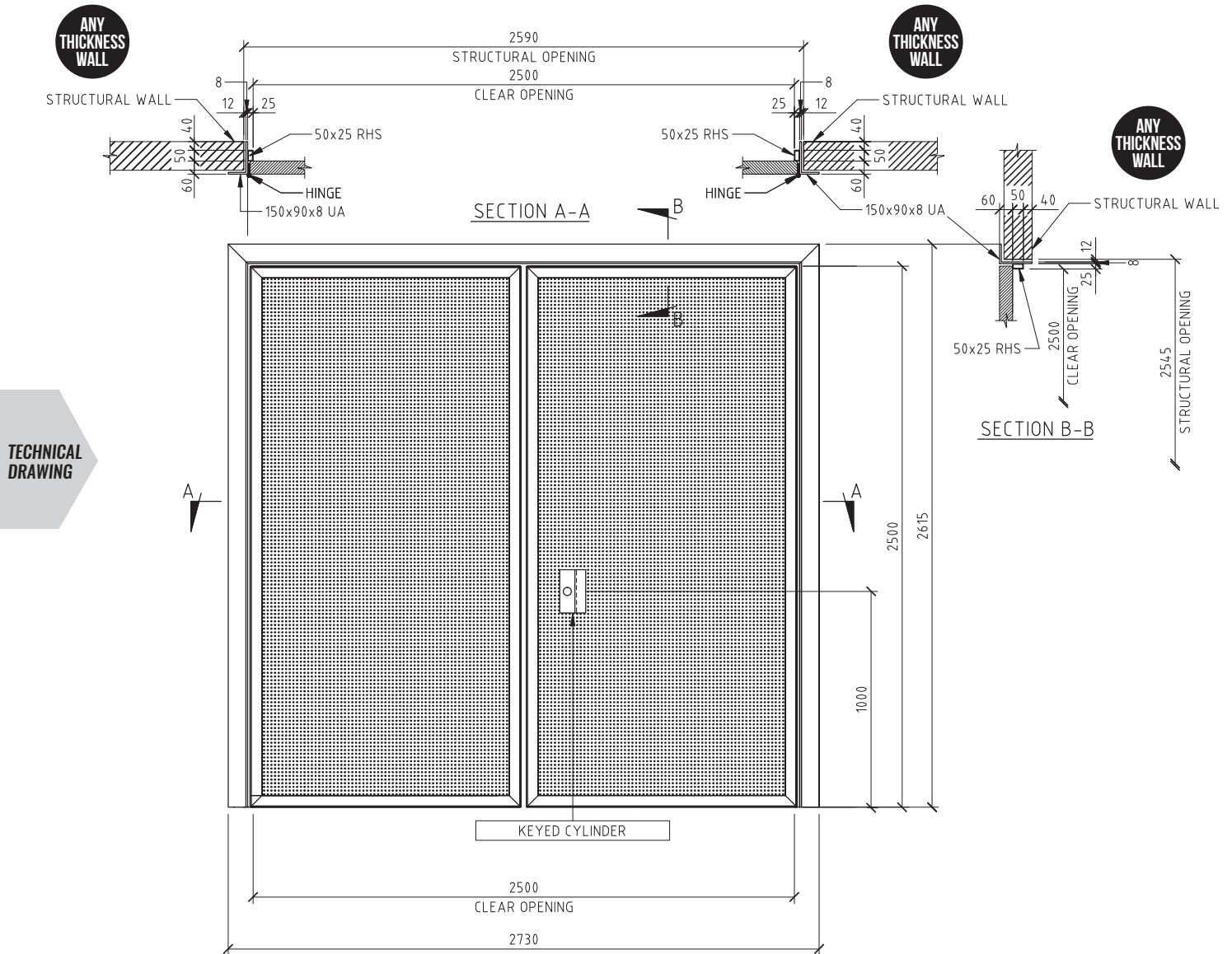
WE CAN INSTALL AND CERTIFY



DOORS CAN BE SHIPPED AUSTRALIA-WIDE

SUB-STATION DOOR

DURASUB-D-EXT-01



ISOMETRIC VIEW

05

VIC 1300 800 956 | NSW 1300 878 949 | www.blockadebarriers.com.au



Durasub double doors are manufactured using a composite panel of fibre reinforced cement mechanically bonded to punched steel sheets on both outer surfaces.

Classed as a Non-Combustible 4 hr Fire resistant Class 1 to AS1530 part 4 : 2005 Blast resistant DIN 4102 Part 2 and 3 requirements. Each door leaf fitted with one intumescent door louvre to allow for maximum air flow.

Approved in the Power and Energy sector, the Substation door offers durable long life protection for equipment and facilities.



DURASUB-D-EXT-01-2L

FEATURES

- Fire resistance level - /240/30
- Tested AS1530.4 -2005
- Tested AS1905.1:2015
- Impact resistant 2793 J
- Corrosion resistant
- Moisture resistant
- Temperature insulated panels
- Intumescent door louvres 450 mm x 450mm
- 50mm thick door panels
- Unequal angle door frame
- Pressed metal door frame
- Pre-hung with hardware
- Painted or Powder-coated

HARDWARE

- Piano hinges 3mm
- Extended hinges to allow for cladding
- TS83 Door closers
- Panic exit device
- 2-way extension rods
- Night latch & handles
- Sequence selector

CLEAR OPENING SIZES

- Min – 1580mm x 2000mm
- Max – 2500mm x 2500mm

STRUCTURAL WALL THICKNESS

- Any thickness



06



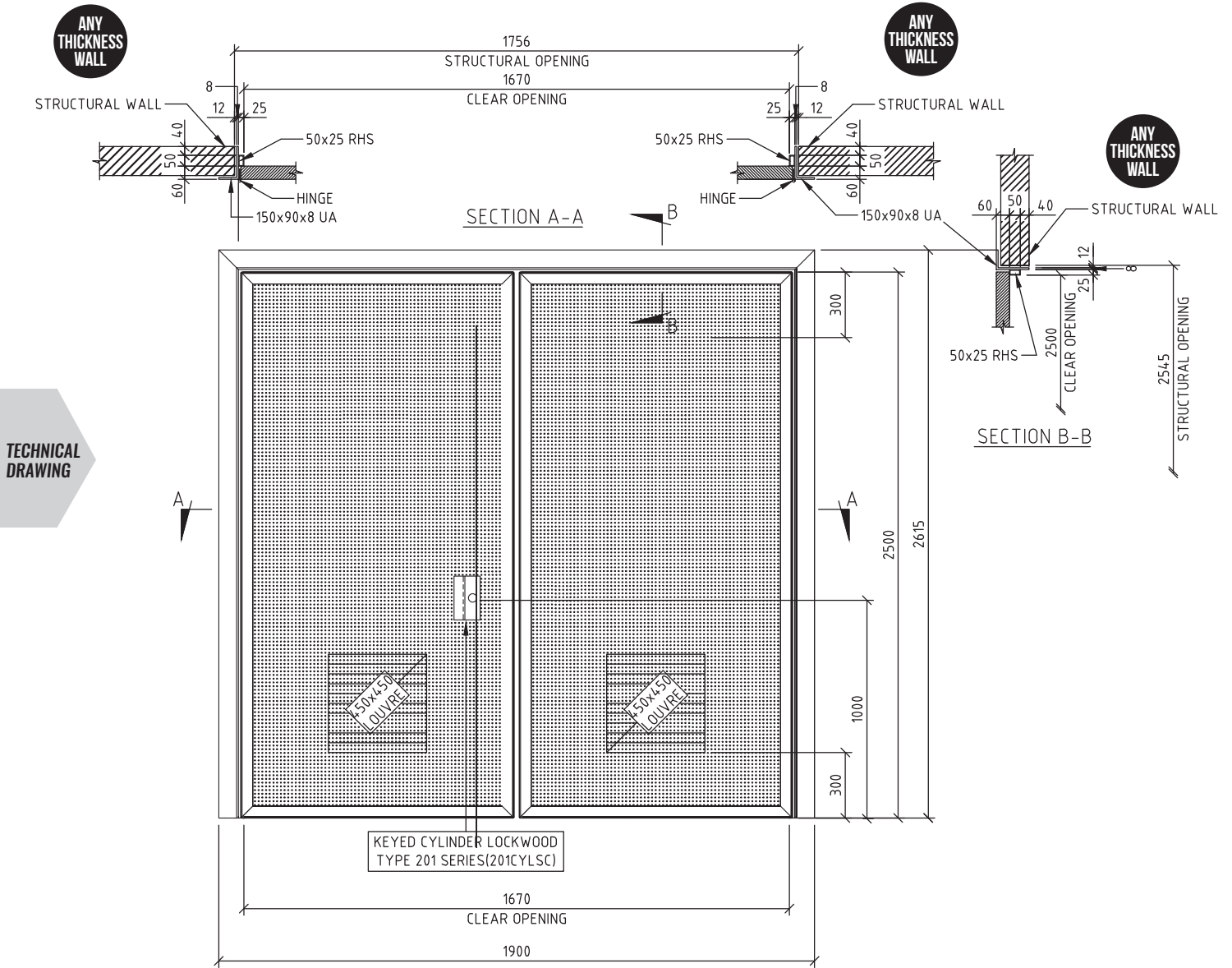
WE CAN INSTALL AND CERTIFY



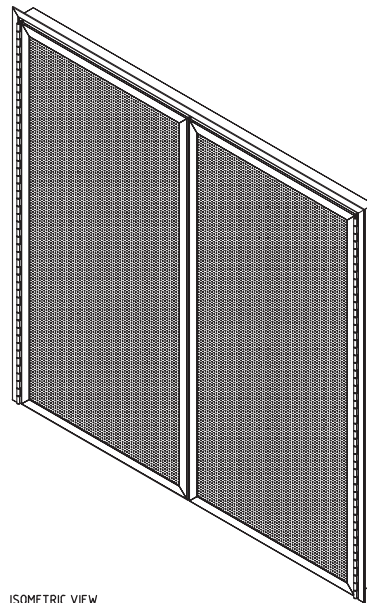
DOORS CAN BE SHIPPED AUSTRALIA-WIDE

SUB-STATION DOOR

DURASUB-D-EXT-01-2L



TECHNICAL DRAWING





Durasub double doors are manufactured using a composite panel of fibre reinforced cement mechanically bonded to punched steel sheets on both outer surfaces.

Classed as a Non-Combustible 4 hr Fire resistant Class 1 to AS1530 part 4 : 2005 Blast resistant DIN 4102 Part 2 and 3 requirements. Each door leaf fitted with two intumescent door louvres to allow for maximum air flow.

Approved in the Power and Energy sector, the Substation door offers durable long-life protection for equipment and facilities.



DURASUB-D-EXT-01-4L



FEATURES

- Fire resistance level - /240/30
- Tested AS1530.4 -2005
- Tested AS1905.1:2015
- Impact resistant 2793 J
- Corrosion resistant
- Moisture resistant
- Insulated panels
- Intumescent door louvres 450mm x 450mm
- 50mm thick door panels
- Unequal angle door frame
- Pressed metal door frame
- Pre-hung with hardware
- Painted or Powder-coated

HARDWARE

- Piano hinges 3mm
- Extended hinges to allow for cladding
- TS83 Door closers
- Panic exit device
- 2-way extension rods
- Night latch & handles
- Sequence selector

CLEAR OPENING SIZES

- Min – 1580mm x 2000mm
- Max – 2500mm x 2500mm

STRUCTURAL WALL THICKNESS

- Any thickness



08



WE CAN INSTALL AND CERTIFY



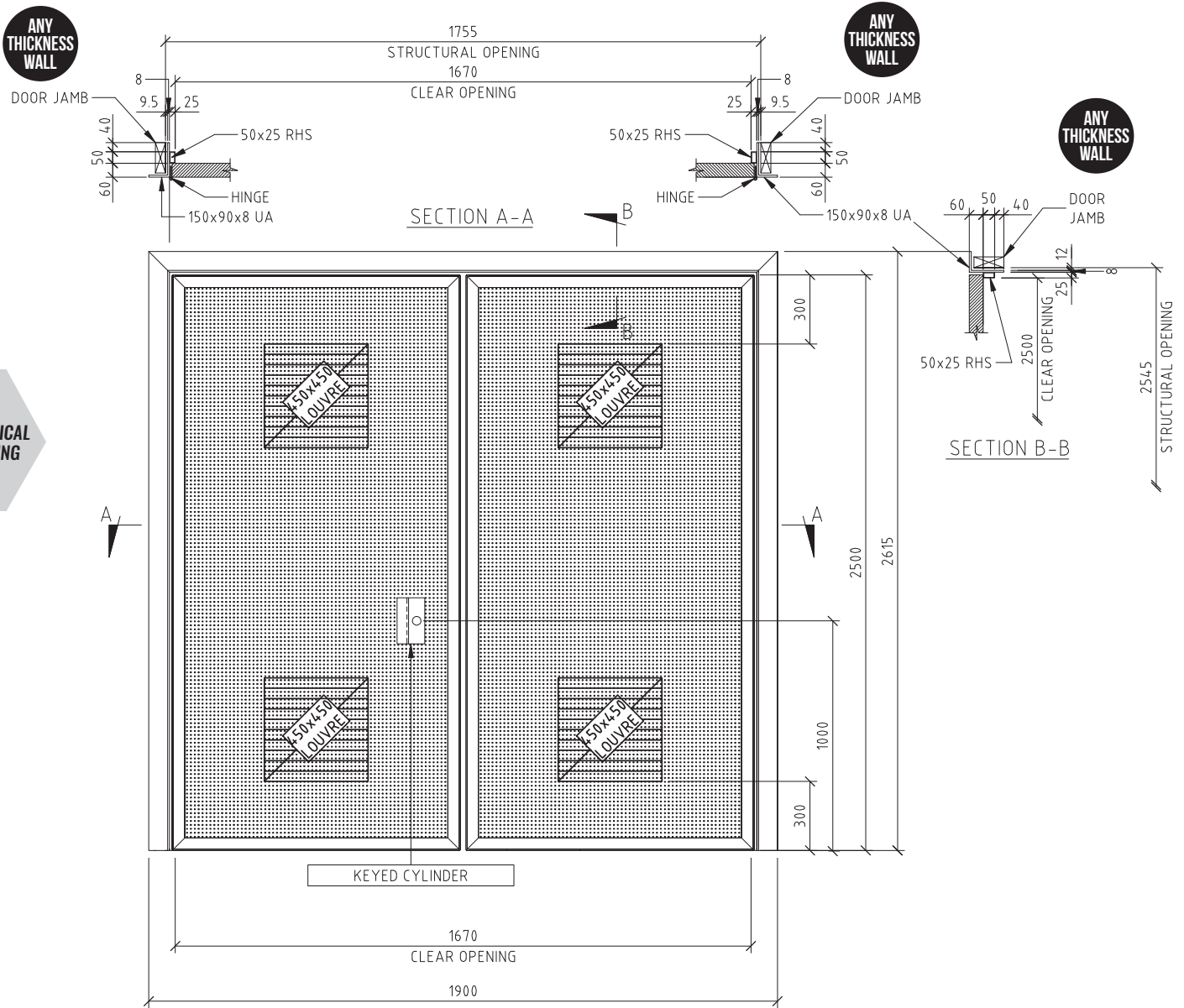
DOORS CAN BE SHIPPED AUSTRALIA-WIDE

SUB-STATION DOOR

DURASUB-D-EXT-01-4L



TECHNICAL
DRAWING





Durasub double doors are manufactured using a composite panel of fibre reinforced cement mechanically bonded to punched steel sheets on both outer surfaces.

Classed as a Non-Combustible 4 hr Fire resistant Class 1 to AS1530 part 4 : 2005 Blast resistant DIN 4102 Part 2 and 3 requirements. Each door leaf fitted with three intumescent door louvres to allow for maximum air flow.

Approved in the Power and Energy sector, the Substation door offers durable long-life protection for equipment and facilities.



DURASUB-D-EXT-01-6L



FEATURES

- Fire resistance level - /240/30
- Tested AS1530.4 -2005
- Tested AS1905.1:2015
- Impact resistant 2793 J
- Corrosion resistant
- Moisture resistant
- Insulated panels
- Intumescent door louvres 600mm x 300mm
- 50mm thick door panels
- Unequal angle door frame
- Pressed metal door frame
- Pre-hung with hardware
- Painted or Powder-coated

HARDWARE

- Piano hinges 3mm
- Hinges to allow for cladding
- TS83 Door closers
- Panic exit device
- 2-way extension rods
- Night latch & handles
- Sequence selector

CLEAR OPENING SIZES

- Min – 1580mm x 2000mm
- Max – 2500mm x 2500mm

STRUCTURAL WALL THICKNESS

- Any thickness

10



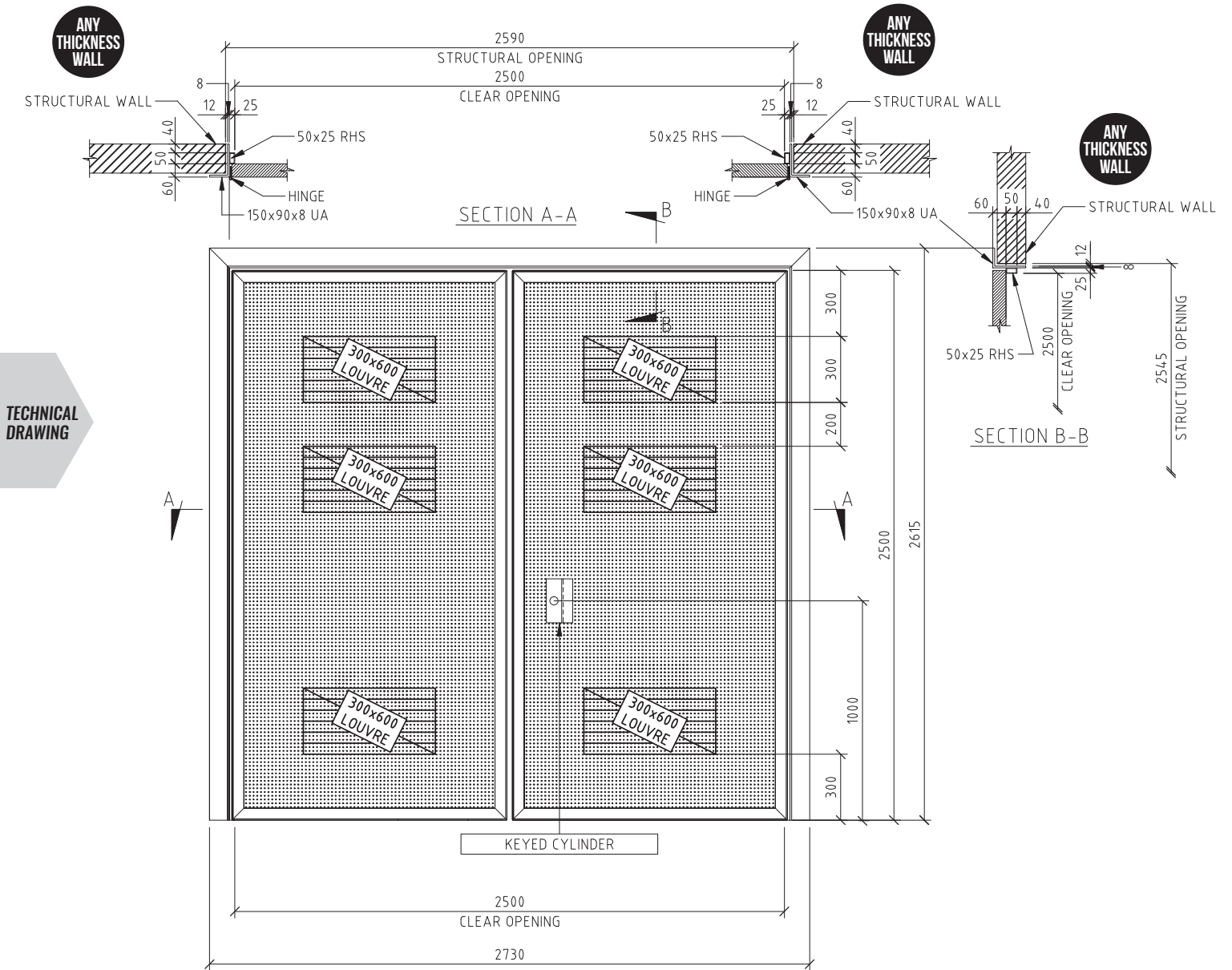
WE CAN INSTALL AND CERTIFY



DOORS CAN BE SHIPPED AUSTRALIA-WIDE

SUB-STATION DOOR

DURASUB-D-EXT-01-6L

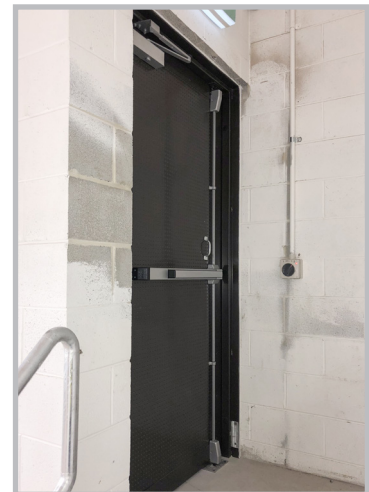




Durasub Single doors are manufactured using a composite panel of fibre reinforced cement mechanically bonded to punched steel sheets on both outer surfaces.

Classed as a Non-Combustible 4 hr Fire resistant Class 1 to AS1530 part 4 : 2005 Blast resistant DIN 4102 Part 2 and 3 requirements.

Approved in the Power and Energy sector, the Substation door offers durable long life protection for equipment and facilities.



DURASUB-S-EXT-01



FEATURES

- Fire resistance level - /240/30
- Tested AS1530.4 -2005
- Tested AS1905.1:2015
- Impact resistant 2793 J
- Corrosion resistant
- Acoustic rated 49RW
- Moisture resistant
- Insulated panels
- 50mm thick door panels
- Unequal angle door frame
- Pressed metal door frame
- Pre-hung with hardware
- Painted or Powder-coated

HARDWARE

- Piano hinges 3mm
- Extended hinges to allow for cladding
- TS83 Door closers
- Panic exit device
- 2-way extension rods
- Night latch & handle

CLEAR OPENING SIZES

- Min – 920mm x 2000mm
- Max – 1500mm x 2500mm

STRUCTURAL WALL THICKNESS

- Any thickness

12



WE CAN INSTALL AND CERTIFY

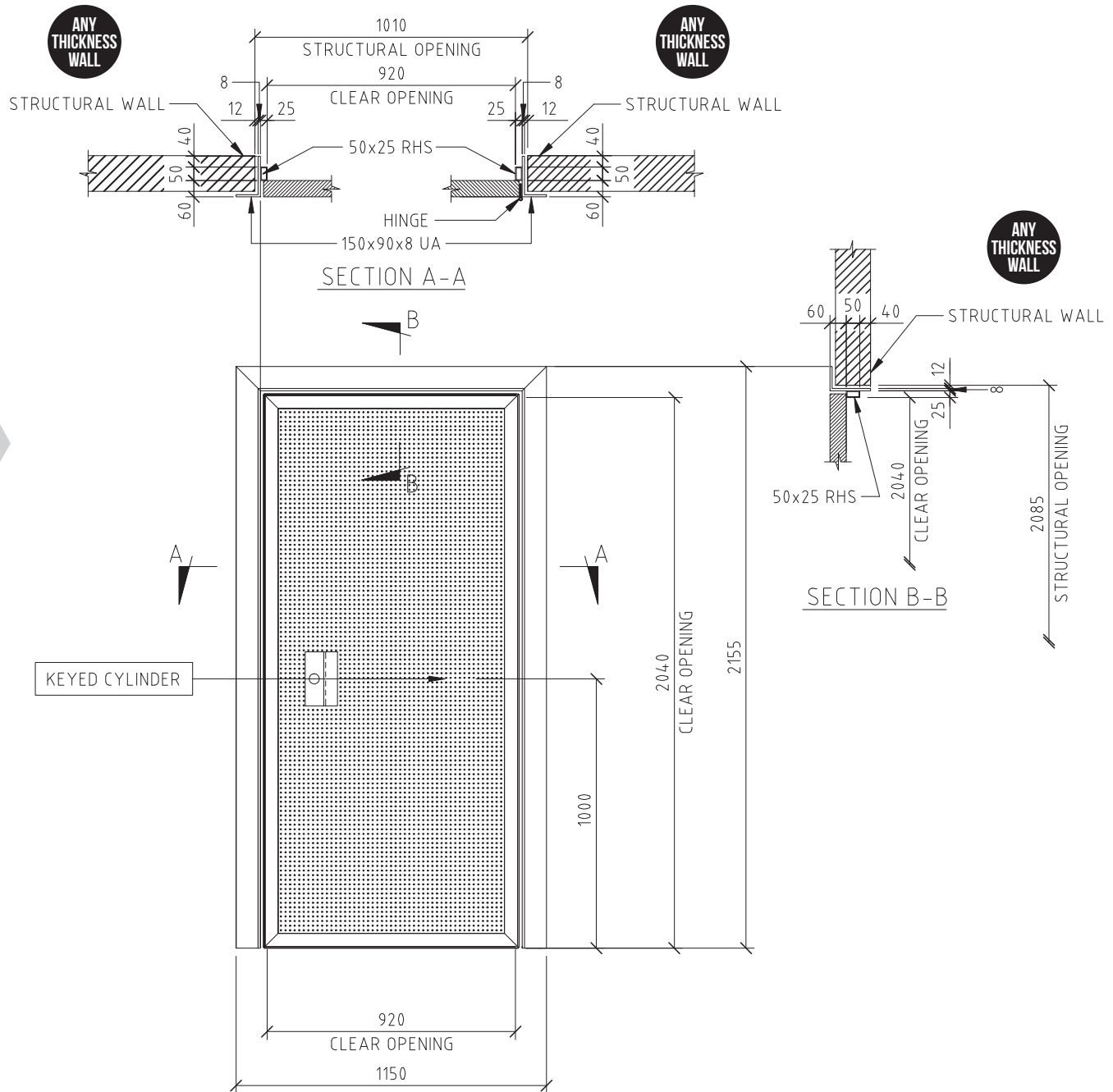


DOORS CAN BE SHIPPED AUSTRALIA-WIDE

VIC 1300 800 956 | NSW 1300 878 949 | www.blockadebarriers.com.au

SUB-STATION DOOR

DURASUB-S-EXT-01





Durasub double doors are manufactured using a composite panel of fibre reinforced cement mechanically bonded to punched steel sheets on both outer surfaces.

Classed as a Non-Combustible 4 hr Fire resistant Class 1 to AS1530 part 4 : 2005 Blast resistant DIN 4102 Part 2 and 3 requirements. Intumescent 2 hr fire rated louvre above the door that can connect to existing Air Con System or stand alone.

Approved in the Power and Energy sector, the Substation door offers durable long-life protection for equipment and facilities.



DURASUB-D-EXT-02



FEATURES

- Fire resistance level - /240/30
- Tested AS1530.4 -2005
- Tested AS1905.1:2015
- Impact resistant 2793 J
- Corrosion resistant
- Acoustic rated 49RW
- Moisture resistant
- Insulated panels
- Intumescent louvres above
- 50mm thick door panels
- Unequal angle door frame
- Pressed metal door frame
- Pre-hung with hardware
- Painted or Powder-coated

HARDWARE

- Piano hinges 3mm
- Extended hinges to allow for cladding
- TS83 Door closers
- Panic exit device
- 2-way extension rods
- Night latch & handles
- Sequence selector

CLEAR OPENING SIZES

- Min – 1580mm x 2000mm
- Max – 2500mm x 2500mm

STRUCTURAL WALL THICKNESS

- Any thickness



WE CAN INSTALL AND CERTIFY



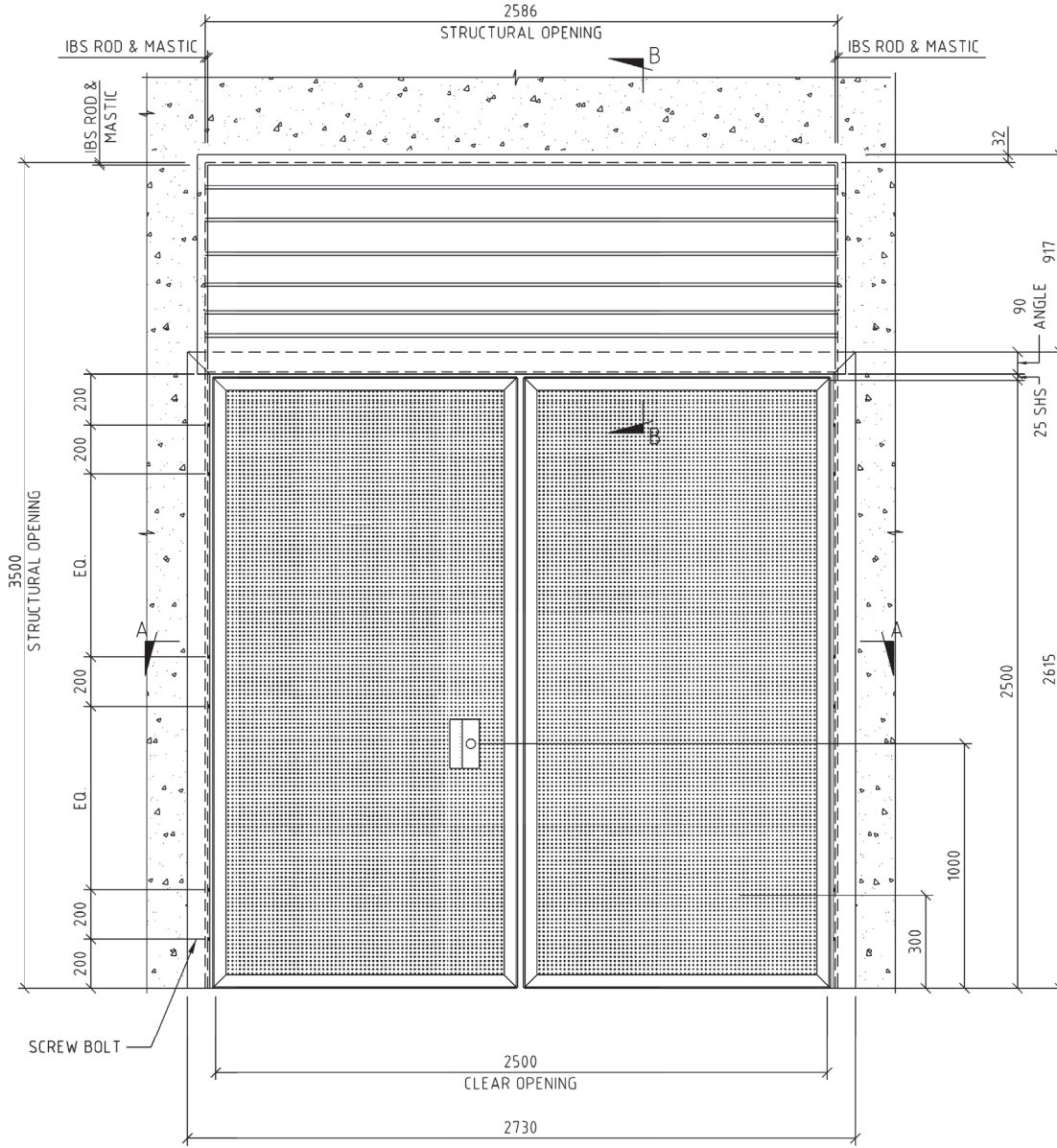
DOORS CAN BE SHIPPED AUSTRALIA-WIDE

SUB-STATION DOOR

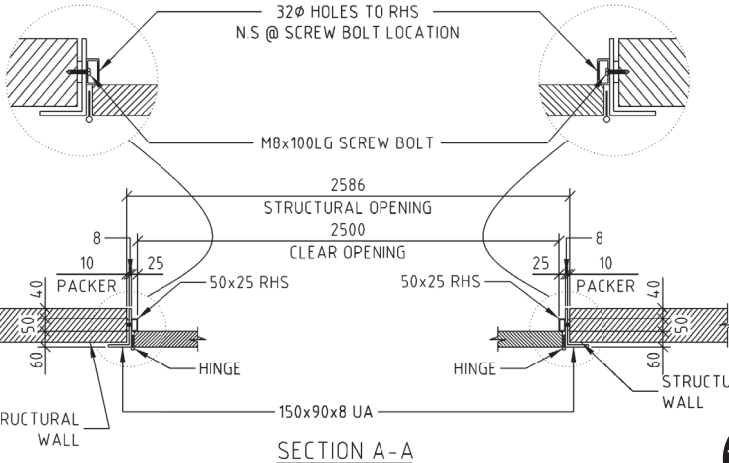
DURASUB-D-EXT-02



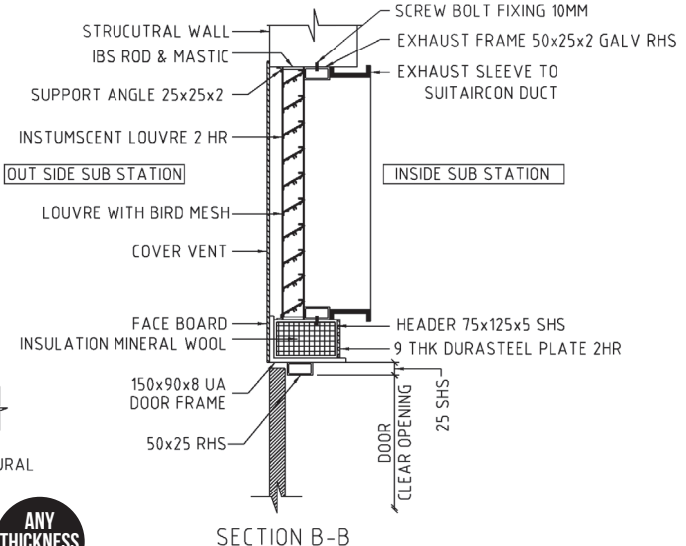
TECHNICAL DRAWING



ANY THICKNESS WALL



ANY THICKNESS WALL



15

VIC 1300 800 956 | NSW 1300 878 949 | www.blockadebarriers.com.au

SUB-STATION DOOR

DURASUB-D-EXT-02-2L



Durasub double doors are manufactured using a composite panel of fibre reinforced cement mechanically bonded to punched steel sheets on both outer surfaces.

Classed as a Non-Combustible 4 hr Fire resistant Class 1 to AS1530 part 4 : 2005 Blast resistant DIN 4102 Part 2 and 3 requirements. Intumescent 2 hr fire rated louvre above the door that can connect to existing Air Con System or stand alone. Each door leaf fitted with one intumescent door louvre to allow for maximum air flow.

Approved in the Power and Energy sector, the Substation door offers durable long-life protection for equipment and facilities.



DURASUB-D-EXT-02-2L

FEATURES

- Fire resistance level - /240/30
- Tested AS1530.4 -2005
- Tested AS1905.1:2015
- Impact resistant 2793 J
- Corrosion resistant
- Acoustic rated 49RW
- Moisture resistant
- Insulated panels
- Intumescent door louvres 450mm x 450mm
- 50mm thick door panels
- Unequal angle door frame
- Pressed metal door frame
- Pre-hung with hardware
- Painted or Powder-coated

HARDWARE

- Piano hinges 3mm
- Extended hinges to allow for cladding
- TS83 Door closers
- Panic exit device
- 2-way extension rods
- Night latch & handles
- Sequence selector

CLEAR OPENING SIZES

- Min – 1580mm x 2000mm
- Max – 2500mm x 2500mm

STRUCTURAL WALL THICKNESS

- Any thickness

16



WE CAN INSTALL AND CERTIFY



DOORS CAN BE SHIPPED AUSTRALIA-WIDE

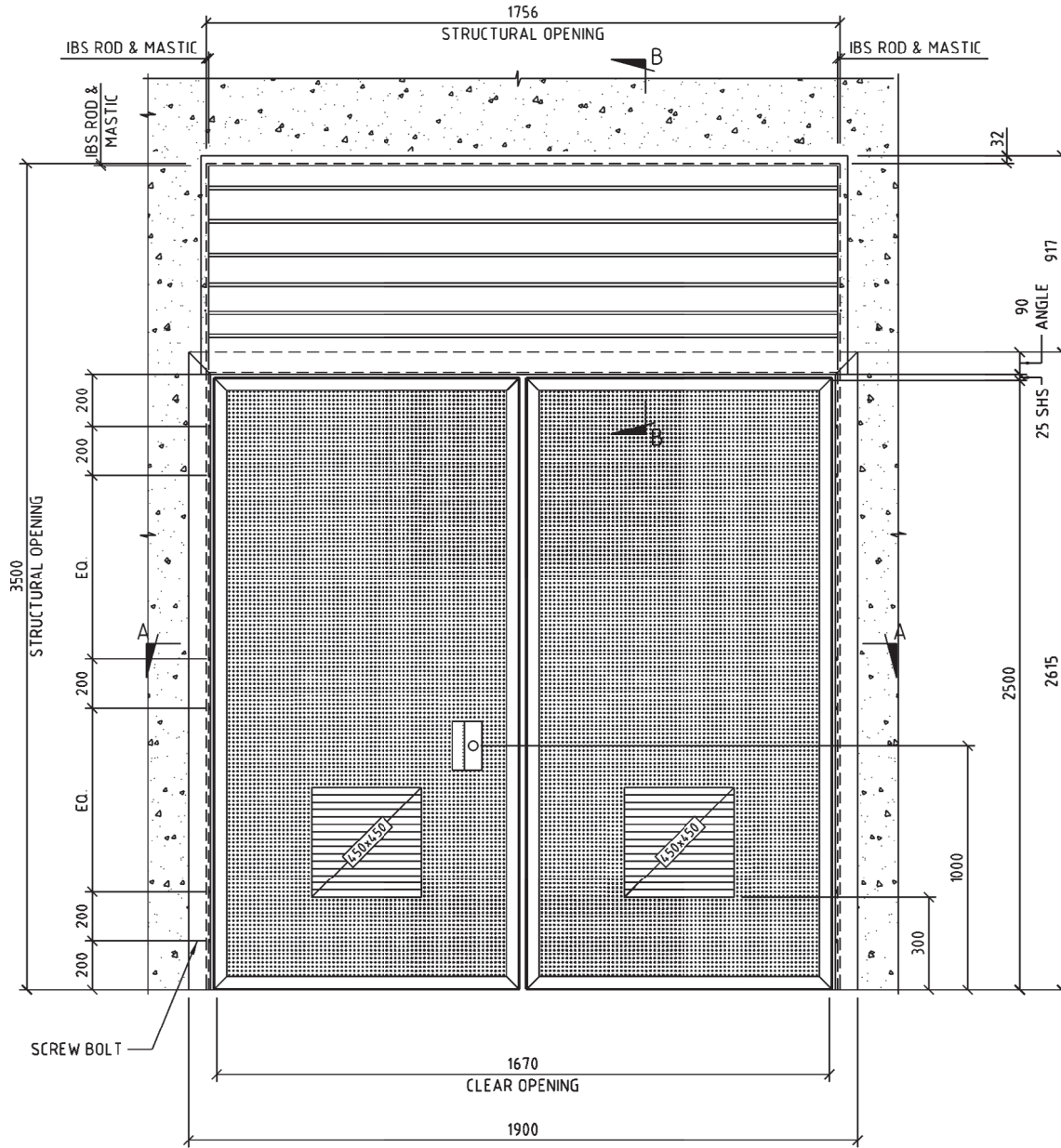
VIC 1300 800 956 | NSW 1300 878 949 | www.blockadebarriers.com.au

SUB-STATION DOOR

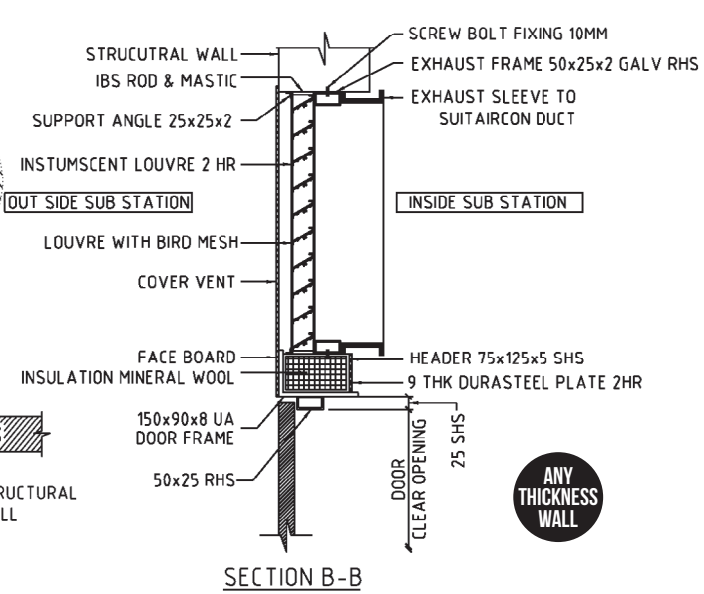
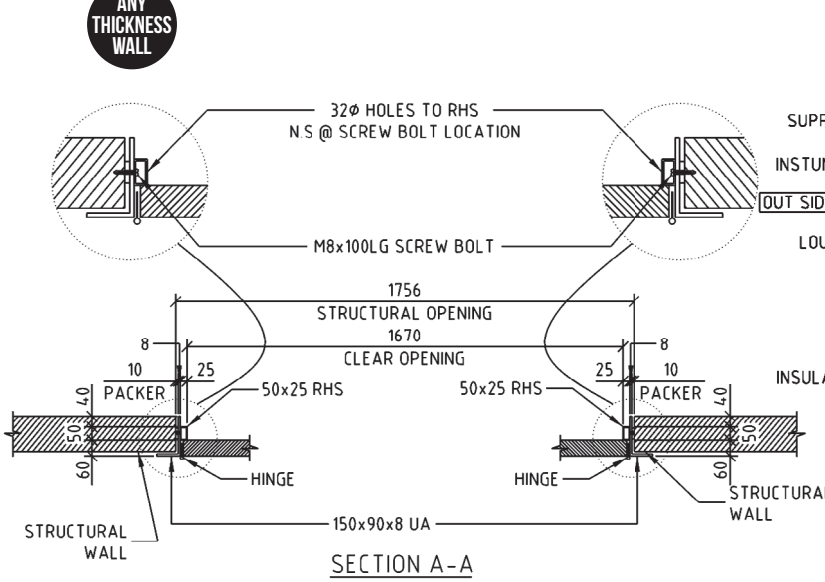
DURASUB-D-EXT-02-2L



TECHNICAL DRAWING



ANY THICKNESS WALL



17

VIC 1300 800 956 | NSW 1300 878 949 | www.blockadebarriers.com.au



Durasub double doors are manufactured using a composite panel of fibre reinforced cement mechanically bonded to punched steel sheets on both outer surfaces.

It is classed as a Non-Combustible 4 hr Fire resistant Class 1 to AS1530 part 4 : 2005 Blast resistant DIN 4102 Part 2 and 3 requirements.

Each door leaf fitted with 2 off Intumescent door louvres to allow for maximum air flow. Intumscent 2hr fire rated louvre above the door that can connect to existing Air Con or stand alone. Approved in the Power and Energy sector, the Substation door offers durable long life protection for equipment and facilities.

DURASUB-D-EXT-02-4L



FEATURES

- Fire resistance level - /240/30
- Tested AS1530.4 -2005
- Tested AS1905.1:2015
- Impact resistant 2793 J
- Corrosion resistant
- Acoustic rated
- Moisture resistant
- Insulated panels
- Intumescent louvres above
- Intumescent door louvers 450mm x 450mm
- 50mm thick door panels
- Unequal angle door frame
- Pressed metal door frame
- Pre-hung with hardware
- Painted or Powder-coated

HARDWARE

- Piano hinges 3mm
- Extended hinges to allow for Cladding
- TS83 door closer
- Panic exit device
- 2-way extension rods
- Night latch & handles
- Sequence selector

CLEAR OPENING SIZES

- Min – 1580mm x 2000mm
- Max – 2500mm x 2500mm

STRUCTURAL WALL THICKNESS

- Any thickness

18



WE CAN INSTALL AND CERTIFY



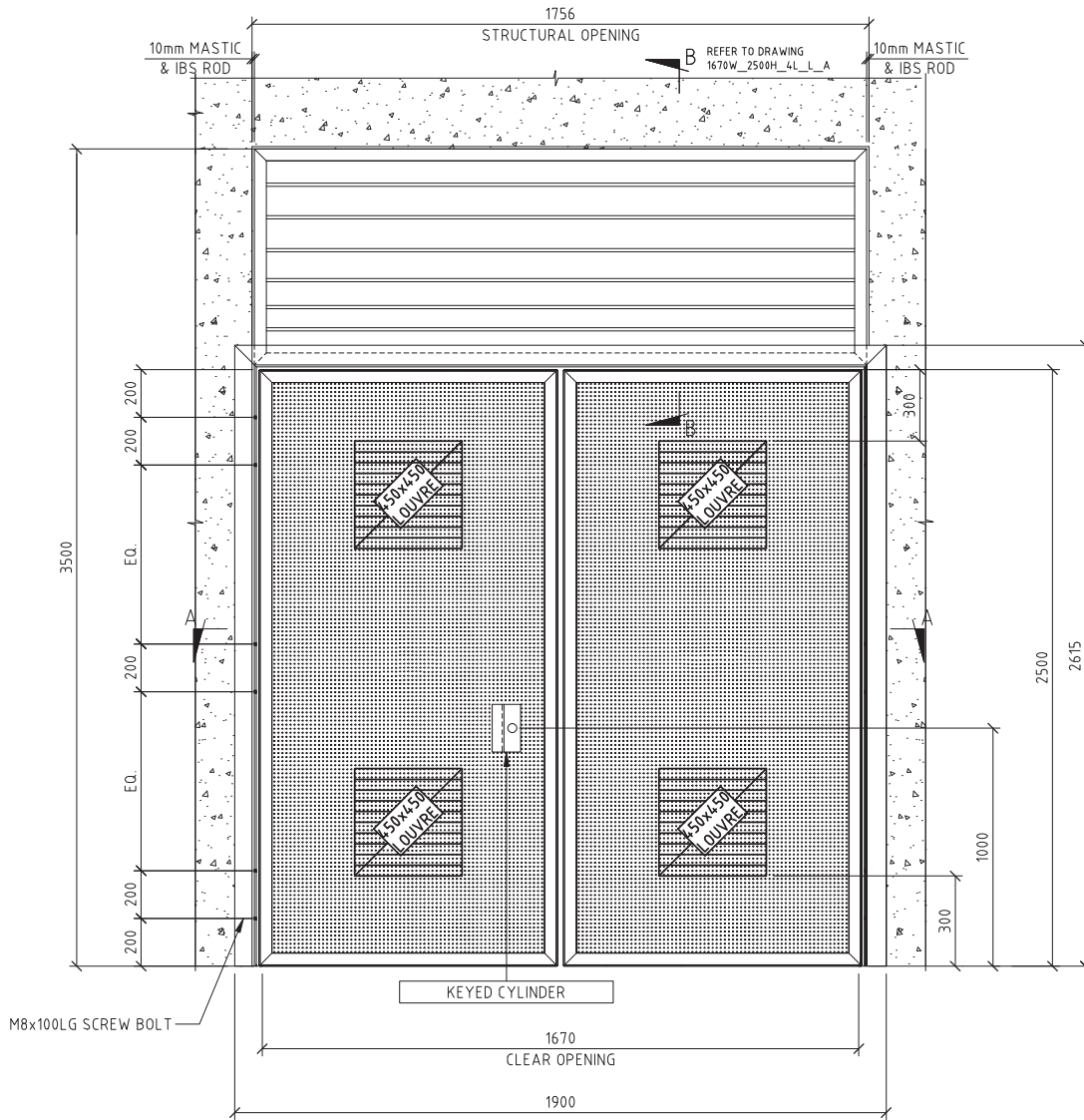
DOORS CAN BE SHIPPED AUSTRALIA-WIDE

SUB-STATION DOOR

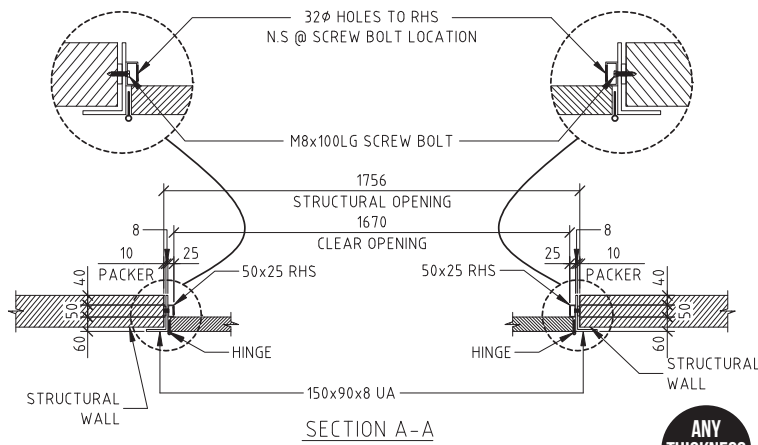
DURASUB-D-EXT-02-4L



TECHNICAL DRAWING



ANY THICKNESS WALL



ANY THICKNESS WALL



Durasub double doors are manufactured using a composite panel of fibre reinforced cement mechanically bonded to punched steel sheets on both outer surfaces.

It is classed as a Non-Combustible 4 hr Fire resistant Class 1 to AS1530 part 4 : 2005 Blast resistant DIN 4102 Part 2 and 3 requirements.

Each door leaf fitted with 3 off Intumescent door louvres to allow for maximum air flow. Intumescent 2hr fire rated louvre above the door that can connect to existing Air Con or stand alone. Approved in the Power and Energy sector, the Substation door offers durable long life protection for equipment and facilities.



DURASUB-D-EXT-02-6L

FEATURES

- Fire resistance level - /240/30
- Tested AS1530.4 -2005
- Tested AS1905.1:2015
- Impact resistant 2793 J
- Corrosion resistant
- Acoustic rated
- Moisture resistant
- Insulated panels
- Intumescent louvres above
- Intumescent louvres 600mm x 300mm
- 50mm thick door panels
- Unequal angle door frame
- Pressed metal door frame
- Pre-hung with hardware
- Painted or Powder-coated

HARDWARE

- Piano hinges 3mm
- Extended hinges to allow for cladding
- TS83 Door closer
- Panic exit device
- 2-way extension rods
- Night latch & handles
- Sequence selector

CLEAR OPENING SIZES

- Min – 1580mm x 2000mm
- Max – 2500mm x 2500mm

STRUCTURAL WALL THICKNESS

- Any thickness



20



WE CAN INSTALL AND CERTIFY



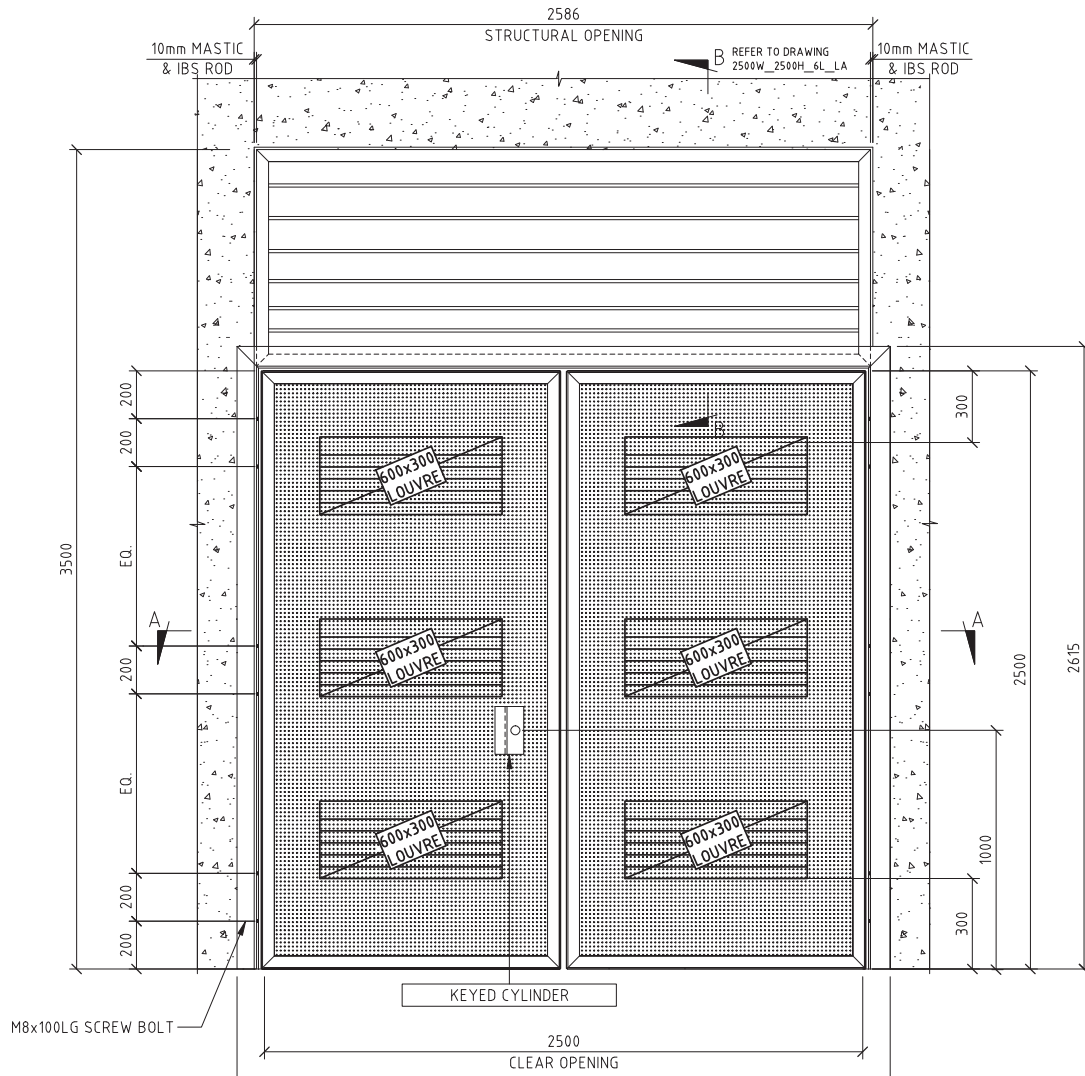
DOORS CAN BE SHIPPED AUSTRALIA-WIDE

SUB-STATION DOOR

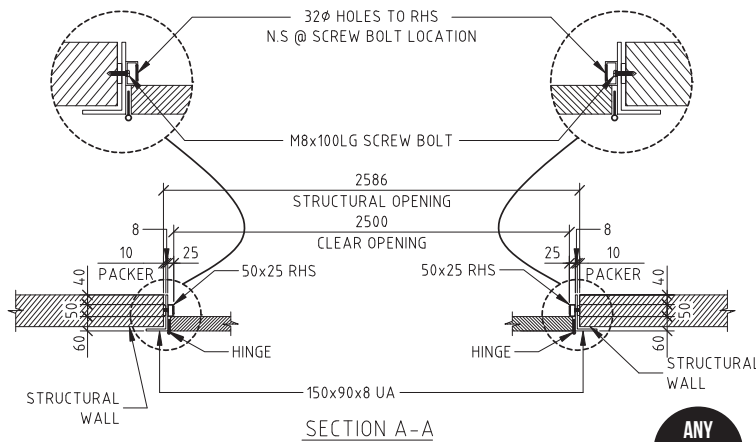
DURASUB-D-EXT-02-6L



TECHNICAL DRAWING



ANY THICKNESS WALL





Insub Substation triple doors are designed to have a removable centre door leaf allowing the clear opening to 3600mm. Ideal for moving large components in and out of the substation room. Each door leaf consists of Aluminium weather louvre to allow for maximum air flow.

Approved in the Power and Energy sector, the Insub door offers durable long-life protection for equipment and facilities.



INSUB-EXT-T-01



FEATURES

- Non Fire-rated Aluminum louvred vents
- Removable door leaf
- Corrosion resistant
- Moisture resistant
- Angle door frame
- Pre-hung with hardware
- Painted or Powder-coated

HARDWARE

- Hinges 100 mm
- Extended hinges to allow for cladding
- Door closers
- Panic Exit Device
- Night latch & handles
- Removable bar

CLEAR OPENING SIZES

- Min – 2000mm x 2000mm
- Max – 4000mm x 4000mm

STRUCTURAL WALL THICKNESS

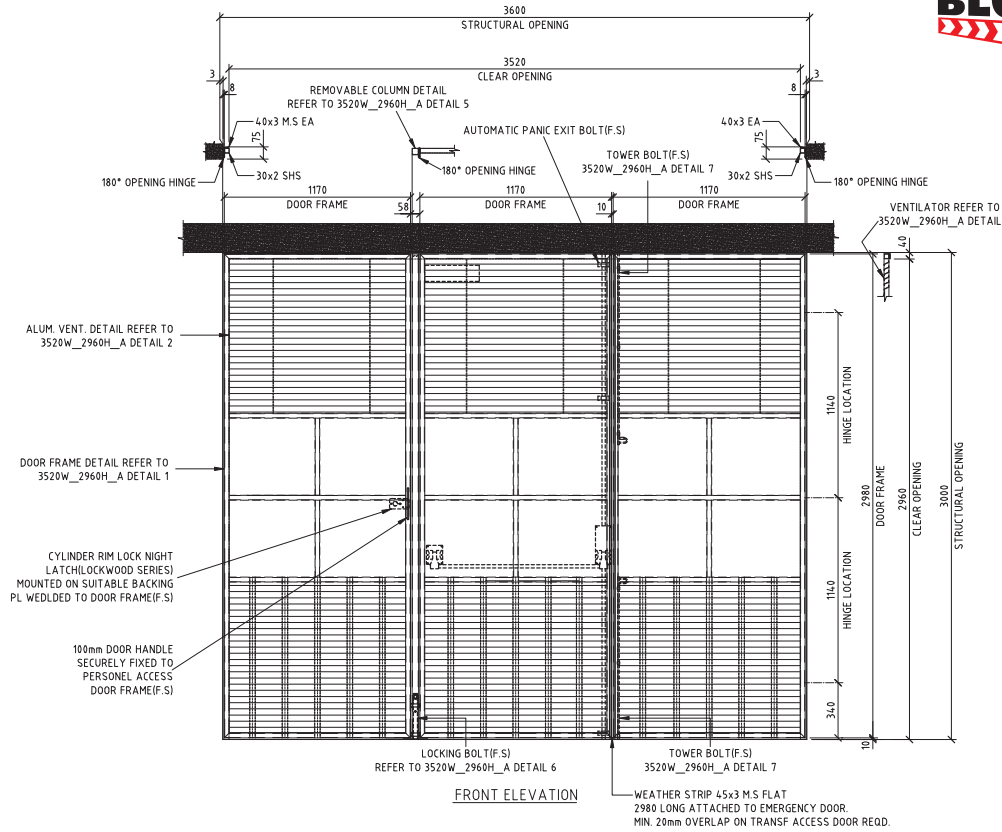
- Any thickness



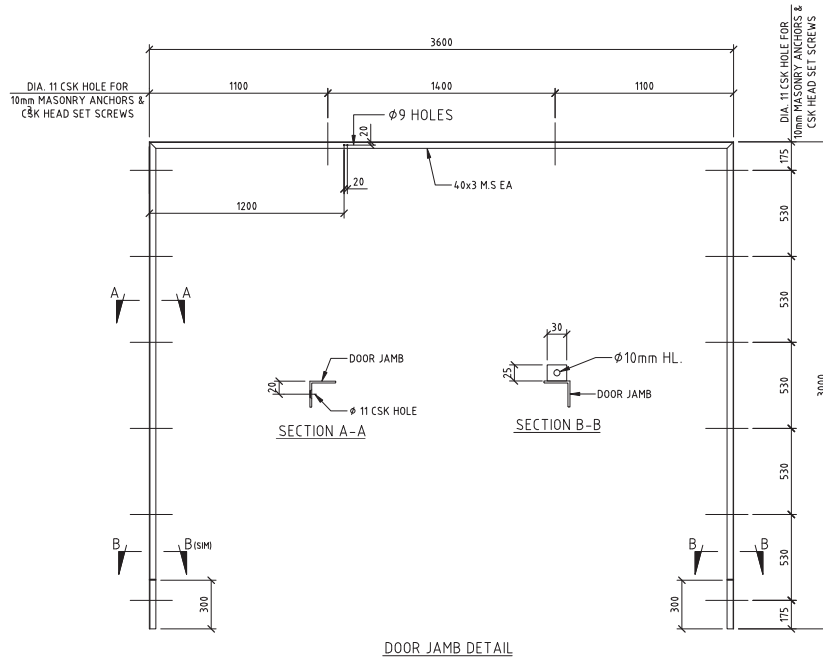
WE CAN INSTALL AND CERTIFY



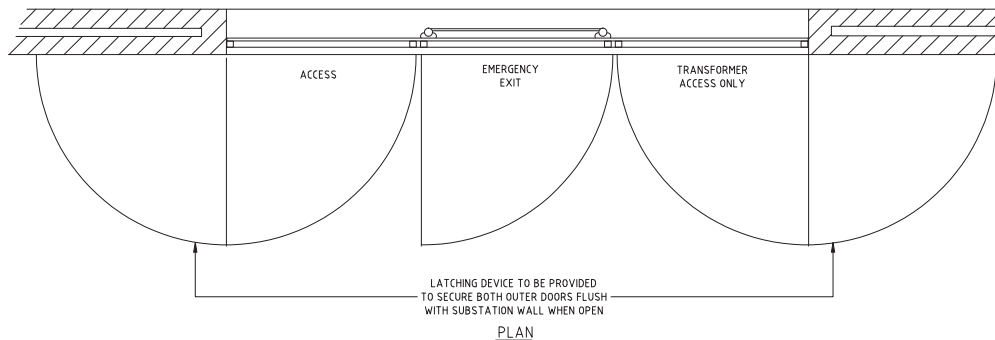
DOORS CAN BE SHIPPED AUSTRALIA-WIDE



TECHNICAL DRAWING



ANY THICKNESS WALL





Insub Substation double doors consists of Aluminium weather louvres to allow for maximum air flow in each door leaf.

Approved in the Power and Energy sector, the Insub door offers durable long-life protection for equipment and facilities.



INSUB-EXT-D-01



FEATURES

- Non Fire-rated Aluminum louvred vents
- Corrosion resistant
- Moisture resistant
- Angle door frame
- Pre-hung with hardware
- Painted or Powder-coated

HARDWARE

- Hinges 100 mm
- Extended hinges to allow for cladding
- Door closers
- Panic Exit Device
- Night latch & handles

CLEAR OPENING SIZES

- Min – 1500mm x 2000mm
- Max – 2000mm x 3000mm

STRUCTURAL WALL THICKNESS

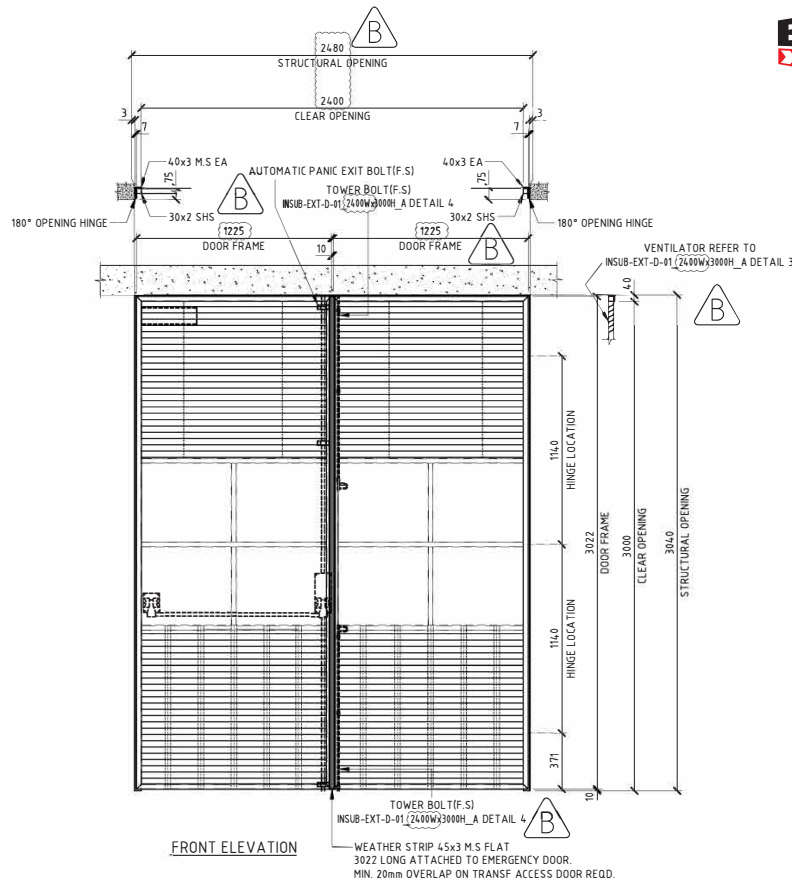
- Any thickness



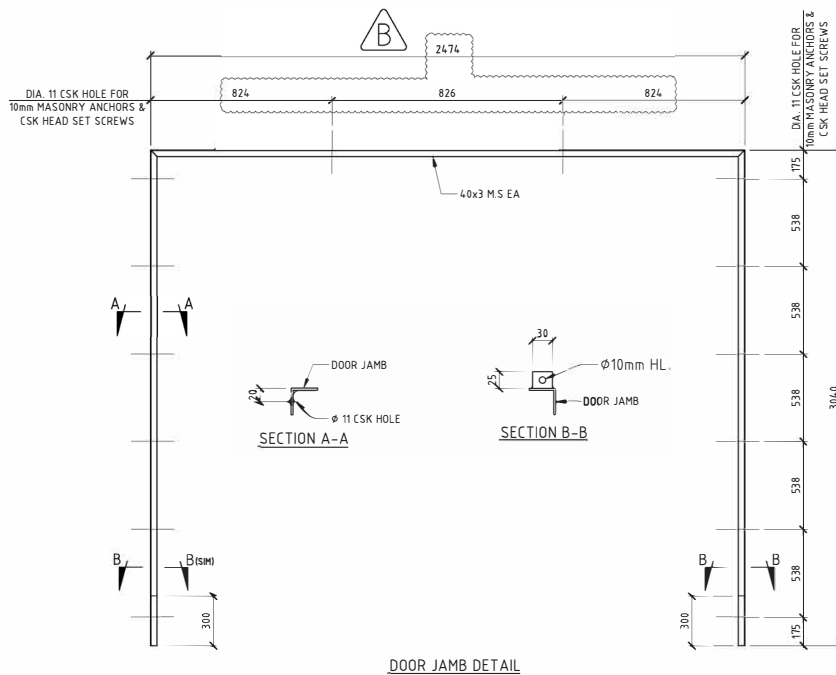
WE CAN INSTALL AND CERTIFY



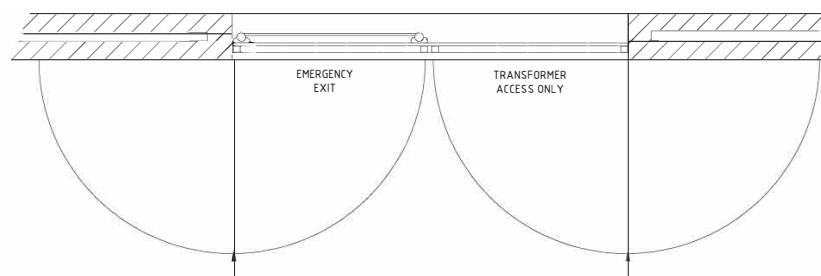
DOORS CAN BE SHIPPED AUSTRALIA-WIDE



TECHNICAL DRAWING



ANY THICKNESS WALL





Insub Substation single doors are designed to have Aluminium weather louvre to allow for maximum air flow.

Approved in the Power and Energy sector, the Insub door offers durable long-life protection for equipment and facilities.



INSUB-EXT-S-01



FEATURES

- Non Fire-rated Aluminum louvred vents
- Corrosion resistant
- Moisture resistant
- Angle door frame
- Pre-hung with hardware
- Painted or Powder-coated

HARDWARE

- Hinges 100 mm
- Extended hinges to allow for cladding
- Door closers
- Panic Exit Device
- Night latch & handle

CLEAR OPENING SIZES

- Min – 720mm x 2000mm
- Max – 1500mm x 2000mm

STRUCTURAL WALL THICKNESS

- Any thickness

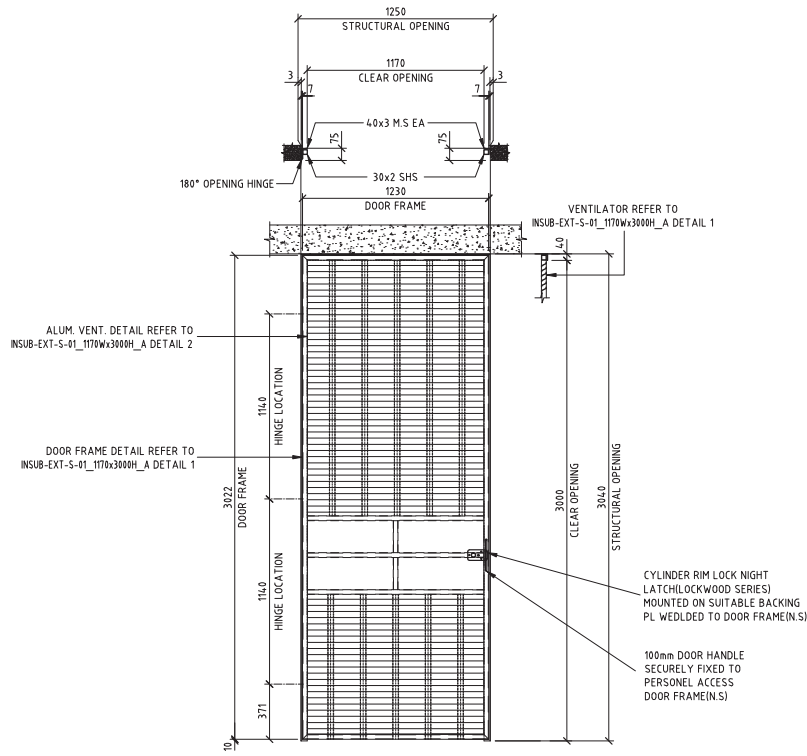


WE CAN INSTALL AND CERTIFY

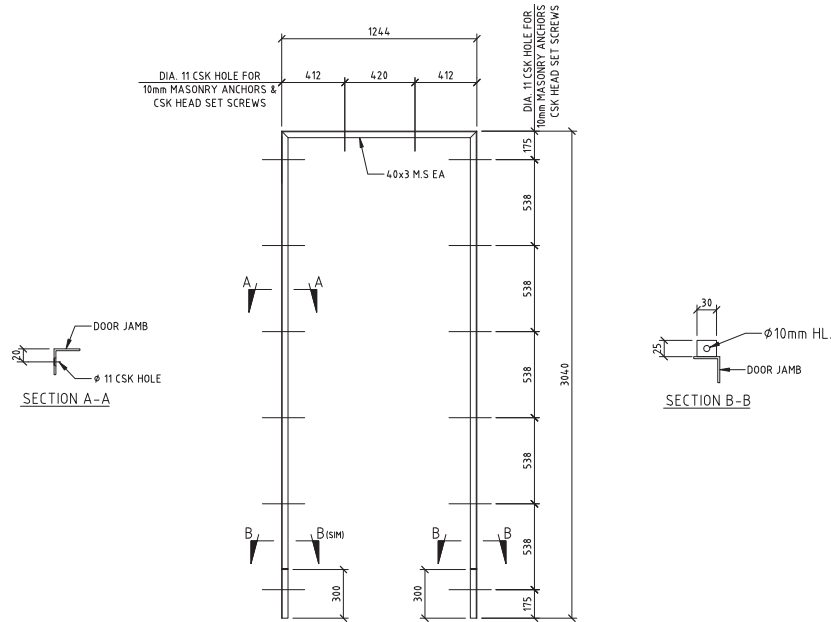


DOORS CAN BE SHIPPED AUSTRALIA-WIDE

TECHNICAL
DRAWING

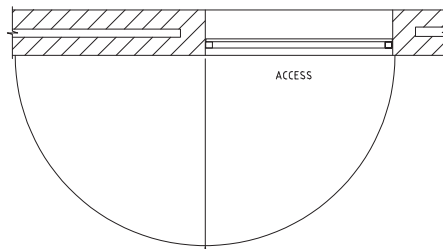


FRONT ELEVATION



DOOR JAMB DETAIL

ANY THICKNESS WALL



LATCHING DEVICE TO BE PROVIDED TO SECURE BOTH OUTER DOORS FLUSH WITH SUBSTATION WALL WHEN OPEN

PLAN



Insub Substation triple doors are designed to have a removable centre door leaf allowing the clear opening to 3600mm. Ideal for moving large components in and out of the substation room. Each door leaf consists of Aluminium weather louvre to allow for maximum air flow.

Fire Dampers have been added to each vent for fire protection as per the Power companies designs.

Approved in the Power and Energy sector, the Insub door offers durable long-life protection for equipment and facilities.



INSUB-EXT-T-01-FR



FEATURES

- Non Fire-rated Aluminium louvred vents
- Intumescent Dampers - /120/-
- Components tested AS1530.4 -2005
- Removable door leaf
- Corrosion resistant
- Moisture resistant
- Angle door frame
- Pre-hung with hardware
- Painted or Powder-coated

HARDWARE

- Hinges 100 mm
- Extended hinges to allow for cladding
- Door closers
- Panic Exit Device
- Night latch & handle
- Removable bar

CLEAR OPENING SIZES

- Min – 2000mm x 2000mm
- Max – 4000mm x 4000mm

STRUCTURAL WALL THICKNESS

- Any thickness

28



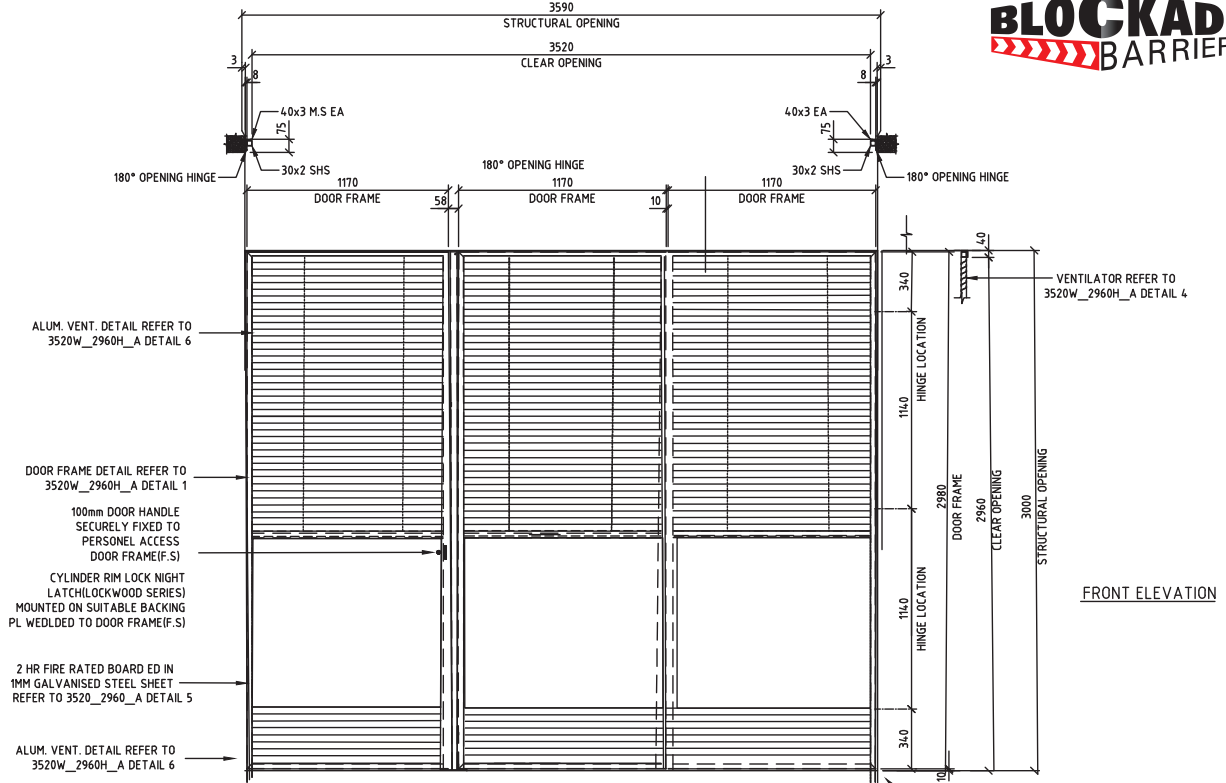
WE CAN INSTALL AND CERTIFY



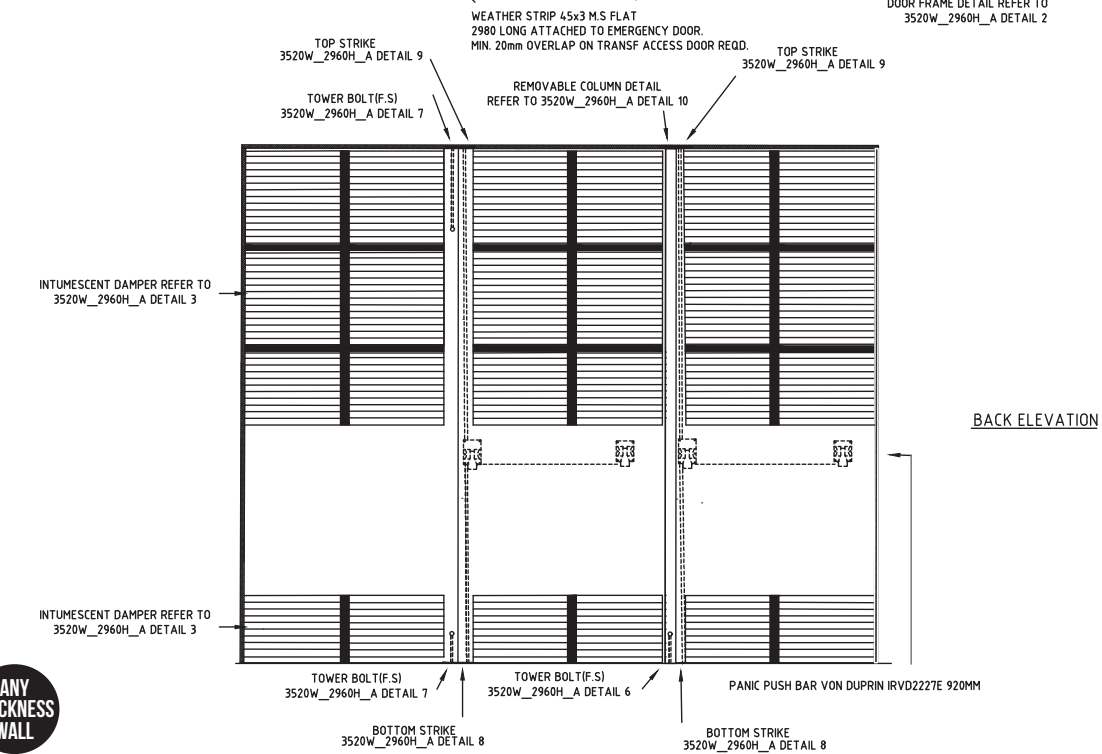
DOORS CAN BE SHIPPED AUSTRALIA-WIDE

SUB-STATION DOOR

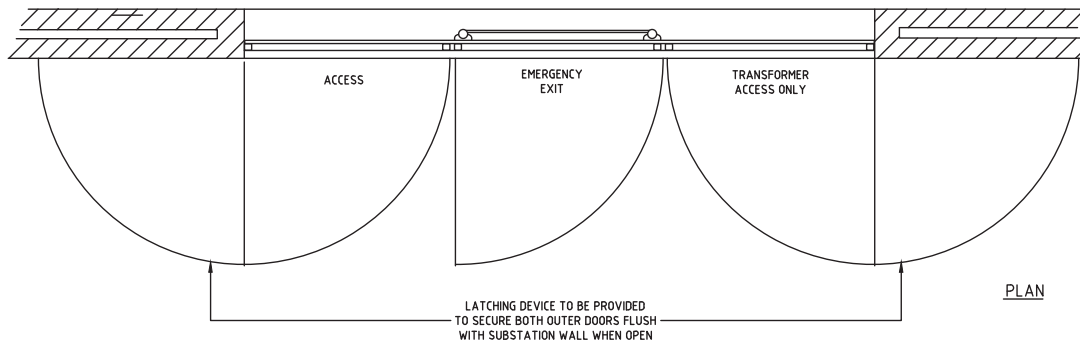
INSUB-EXT-T-01-FR



TECHNICAL DRAWING



ANY THICKNESS WALL





Insub Substation double doors consists of Aluminium weather louvres to allow for maximum air flow in each door leaf.

Fire rated dampers can be added to each vent for fire protection as per the Power companies designs.

Approved in the Power and Energy sector, the Insub door offers durable long-life protection for equipment and facilities.



INSUB-EXT-D-01-FR

FEATURES

- Non Fire-rated Aluminium louvred vents
- Intumescent Dampers -/120/-
- Components tested AS1530.4 -2005
- Corrosion resistant
- Moisture resistant
- Angle door frame
- Pre-hung with hardware
- Painted or Powder-coated

HARDWARE

- Hinges 100 mm
- Extended hinges to allow for cladding
- Door closers
- Panic Exit Device
- Night latch & handles

CLEAR OPENING SIZES

- Min – 1500mm x 2000mm
- Max – 2000mm x 3000mm

STRUCTURAL WALL THICKNESS

- Any thickness



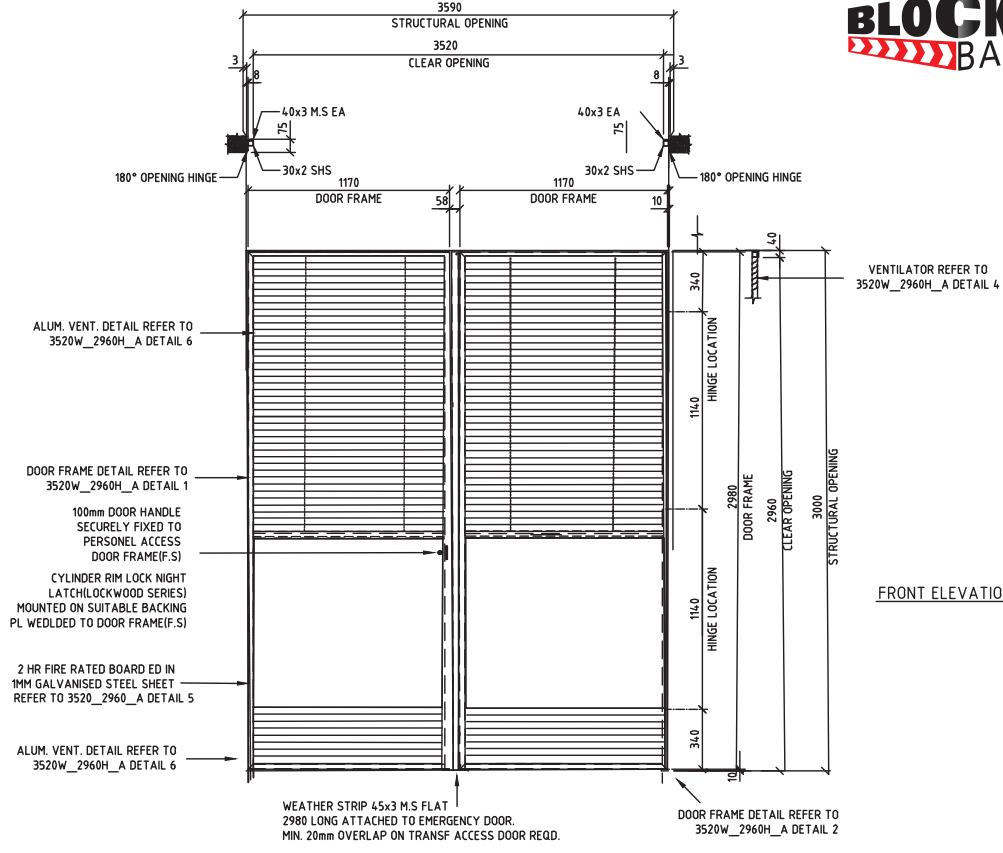
WE CAN INSTALL AND CERTIFY



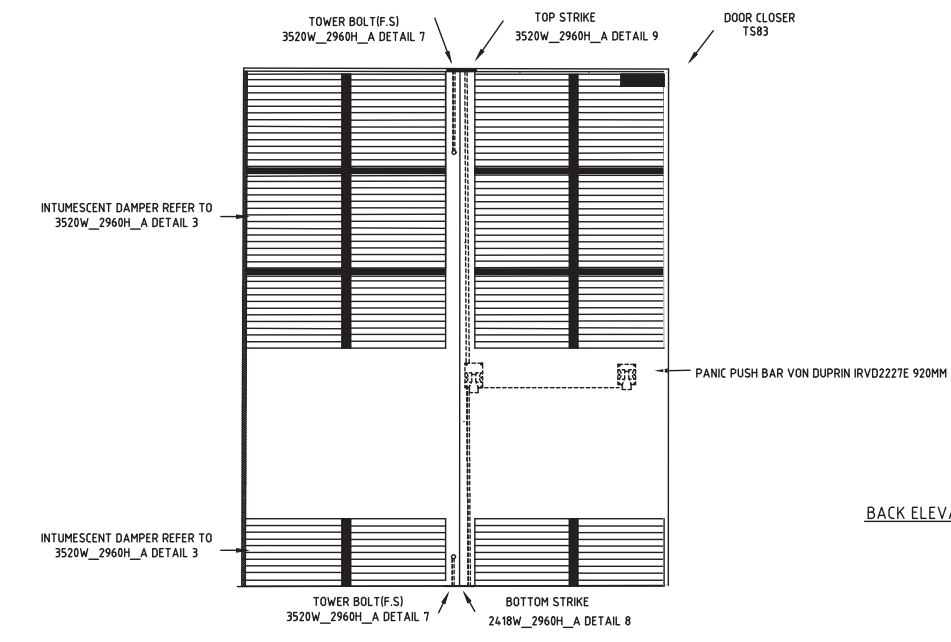
DOORS CAN BE SHIPPED AUSTRALIA-WIDE

SUB-STATION DOOR

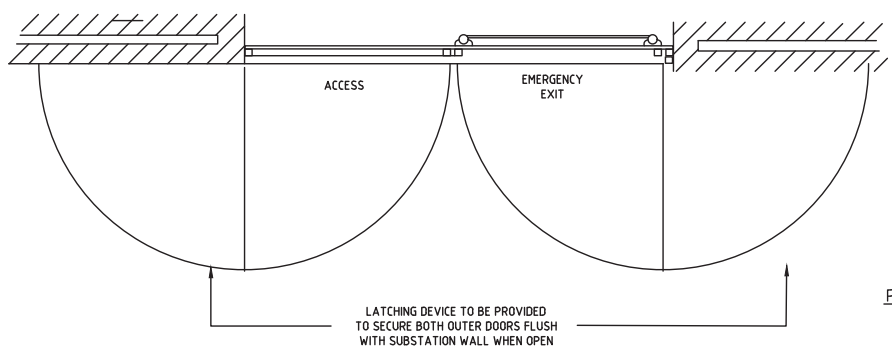
INSUB-EXT-D-01-FR



FRONT ELEVATION



BACK ELEVATION



PLAN

TECHNICAL DRAWING

ANY THICKNESS WALL



Insub Substation double doors consists of Aluminium weather louvres to allow for maximum air flow in each door leaf.

Fire rated dampers can be added to each vent for fire protection as per the Power companies designs.

Approved in the Power and Energy sector, the Insub door offers durable long-life protection for equipment and facilities.



INSUB-EXT-S-01-FR



FEATURES

- Non Fire-rated Aluminium louvred vents
- Intumescent Dampers - /120/-
- Components tested AS1530.4 -2005
- Corrosion resistant
- Moisture resistant
- Angle door frame
- Pre-hung with hardware
- Painted or Powder-coated

HARDWARE

- Hinges 100 mm
- Extended hinges to allow for cladding
- Door closers
- Panic Exit Device
- Night latch & handle

CLEAR OPENING SIZES

- Min – 720mm x 3000mm
- Max – 2000mm x 3000mm

STRUCTURAL WALL THICKNESS

- Any thickness



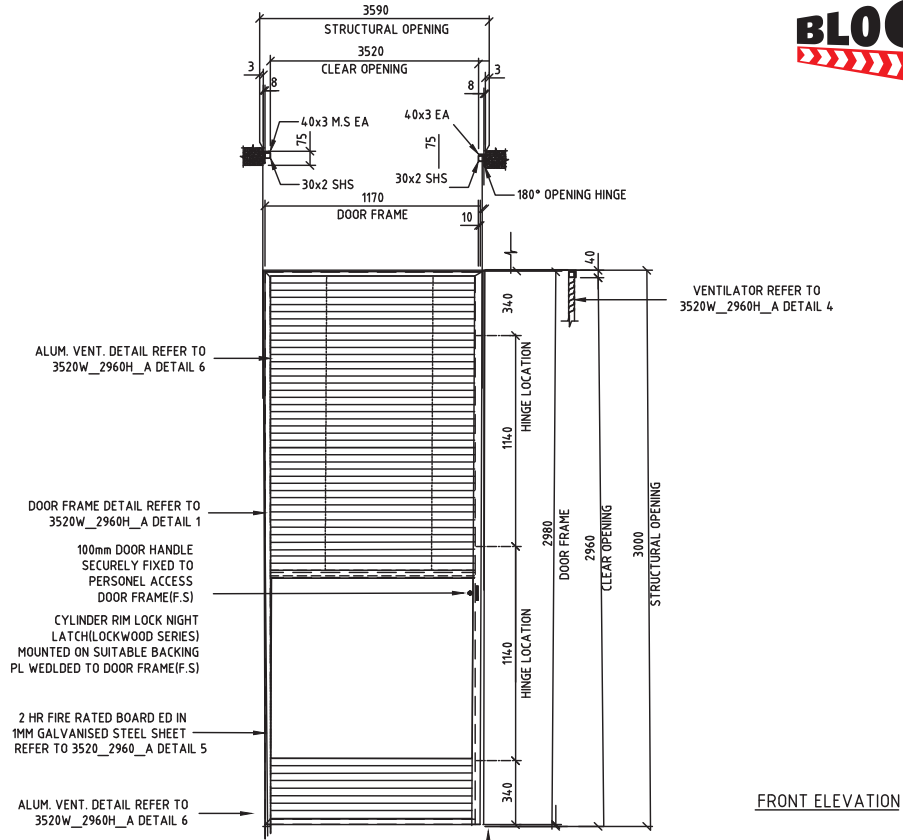
WE CAN INSTALL AND CERTIFY



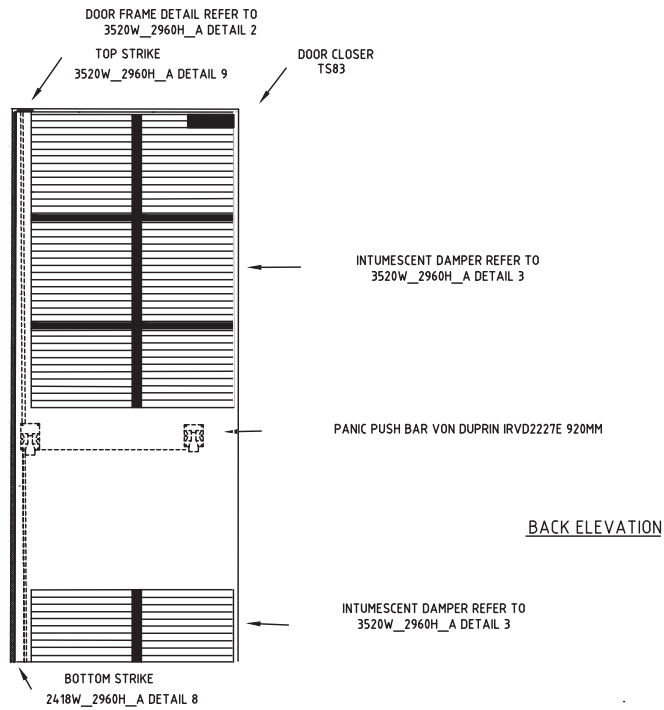
DOORS CAN BE SHIPPED AUSTRALIA-WIDE

SUB-STATION DOOR

INSUB-EXT-S-01-FR

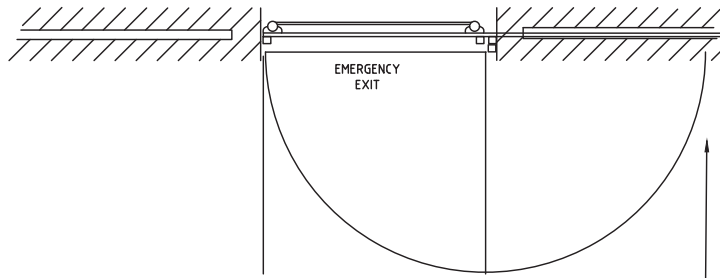


FRONT ELEVATION



BACK ELEVATION

ANY THICKNESS WALL



PLAN

LATCHING DEVICE TO BE PROVIDED TO SECURE OUTER DOORS FLUSH WITH SUBSTATION WALL WHEN OPEN

TECHNICAL DRAWING



Gas double doors are designed for maximum air flow. Each door leaf consists of Aluminium weather louvres.

Approved by the Energy sector, the Gas door offers durable long-life protection for equipment and facilities

GD-EXT-D-01



FEATURES

- Aluminium louvred vents
- Vermin proof mesh
- Corrosion resistant
- Moisture resistant
- Pressed metal frame
- Pre-hung with hardware
- Painted or Powder-coated

HARDWARE

- Hinges 100 mm
- Extended hinges to allow for cladding
- Door closers
- Panic Exit Device
- Night latch & handles

CLEAR OPENING SIZES

- Min – 2000mm x 2000mm
- Max – 4000mm x 4000mm

STRUCTURAL WALL THICKNESS

- Any thickness



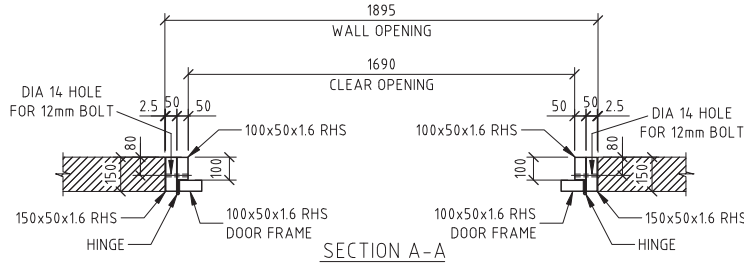
WE CAN INSTALL AND CERTIFY



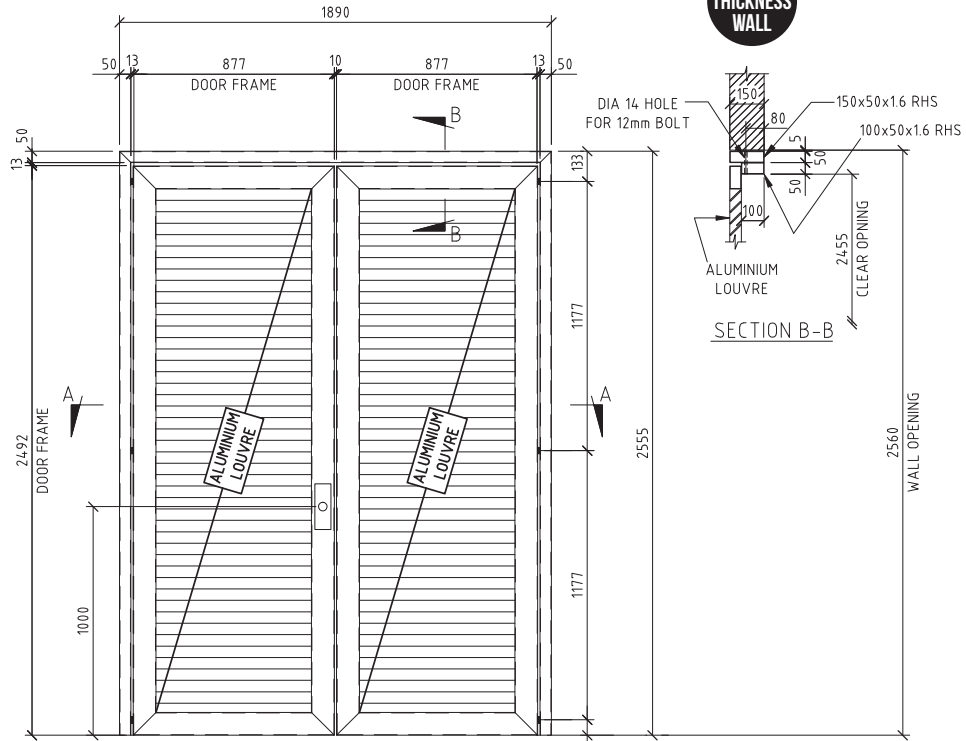
DOORS CAN BE SHIPPED AUSTRALIA-WIDE



ANY THICKNESS WALL

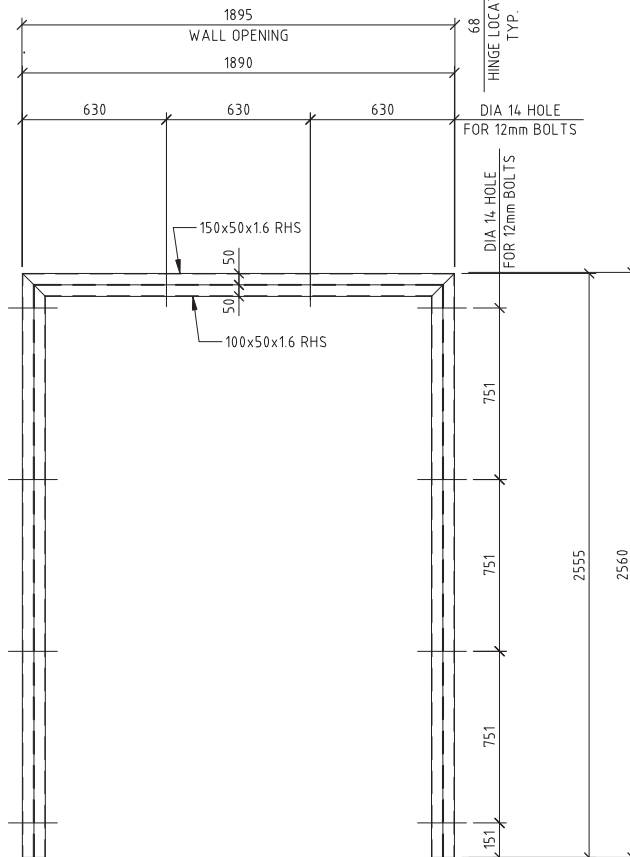


ANY THICKNESS WALL

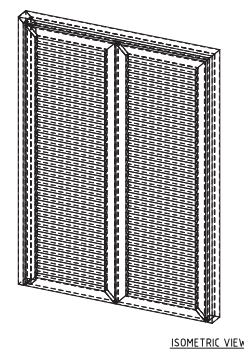


SECTION B-B

TECHNICAL DRAWING



DOOR JAMB DETAIL



ISOMETRIC VIEW



Gas Single Doors are designed for maximum air flow. Each door leaf consists of Aluminium weather louvres.

Approved by the Energy Sector, the Gas door offers durable long-life protection for equipment and facilities.



GD-EXT-S-01



FEATURES

- Aluminium Louvred Vents
- Vermin proof mesh
- Corrosion resistant
- Moisture resistant
- Pressed metal frame
- Pre-hung with hardware
- Painted or Powder-coated

HARDWARE

- Hinges 100 mm
- Extended hinges to allow for cladding
- Door closer
- Night latch & handle

CLEAR OPENING SIZES

- Min – 1000mm x 2000mm
- Max – 1500mm x 2000mm

STRUCTURAL WALL THICKNESS

- Any thickness



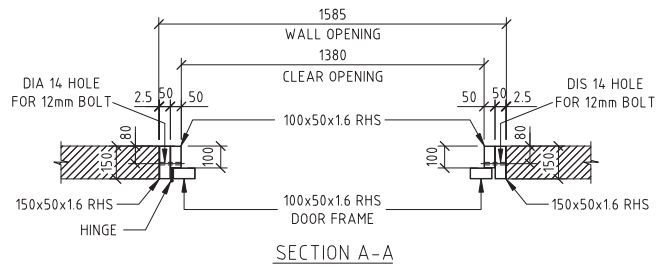
WE CAN INSTALL AND CERTIFY



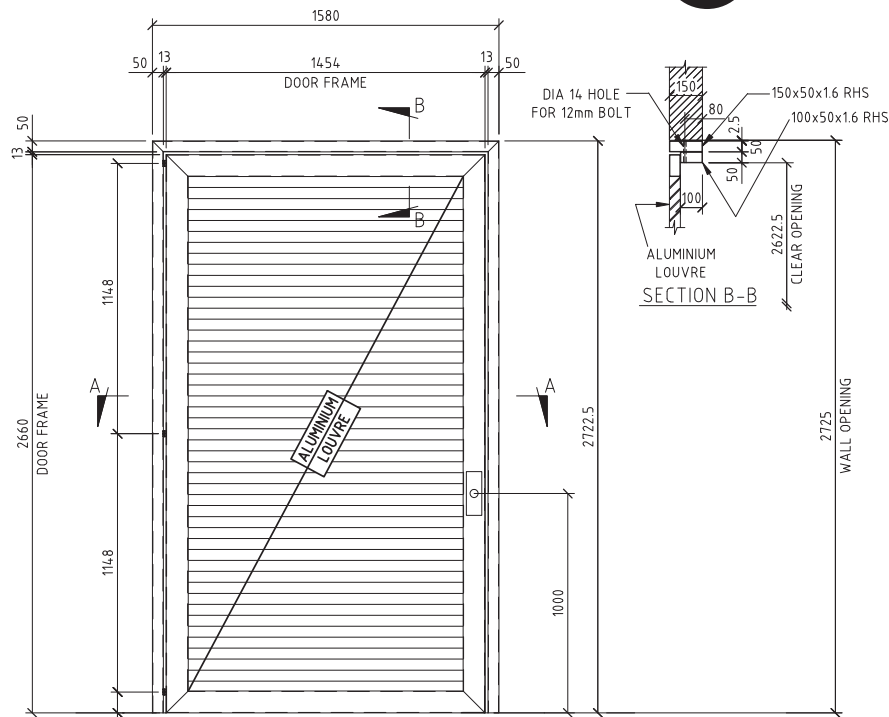
DOORS CAN BE SHIPPED AUSTRALIA-WIDE



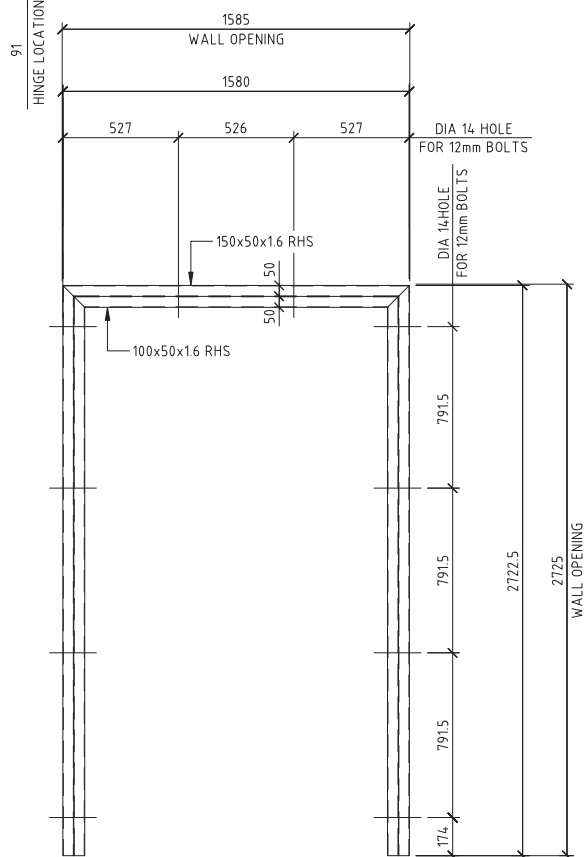
ANY THICKNESS WALL



ANY THICKNESS WALL



TECHNICAL DRAWING



DOOR JAMB DETAIL



Durasub Heavy Duty double doors are manufactured using a composite panel of fibre reinforced cement mechanically bonded to punched steel sheets on both outer surfaces.

A highly impact resistant material, these doors are ideal for the protection and security of all facilities.



DURASUB-H-EXT-01

FEATURES

- Fire Resistance level - /240/30
- Tested AS1530.4 -2005
- Tested AS1905.1:2015
- Impact resistant 2793 J
- Corrosion resistant
- Acoustic rated 49RW
- Moisture resistant
- Insulated panels
- 50mm thick door panels
- Unequal angle door frame
- Pressed metal door frame
- Pre-hung with hardware
- Painted or Powder coated

HARDWARE

- Piano hinges 3mm
- TS83 Door closers
- Mortise lock
- Panic exit device
- Electric strike
- Handles
- Sequence selector

CLEAR OPENING SIZES

- Min – 1580mm x 2000mm
- Max – 5000mm x 5000mm

STRUCTURAL WALL THICKNESS

- Any thickness



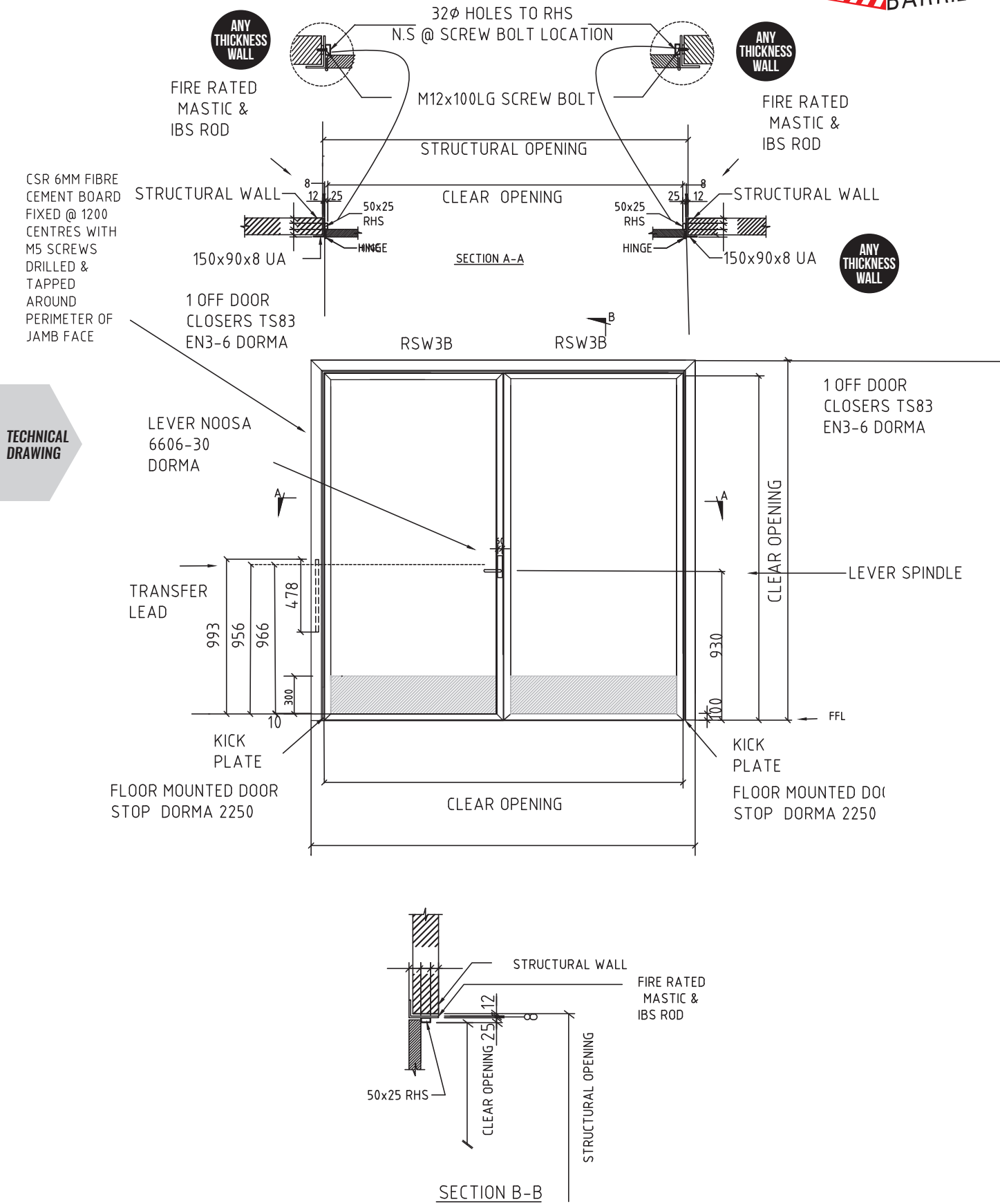
WE CAN INSTALL AND CERTIFY



DOORS CAN BE SHIPPED AUSTRALIA-WIDE

HEAVY-DUTY DOOR

DURASUB-H-EXT-01



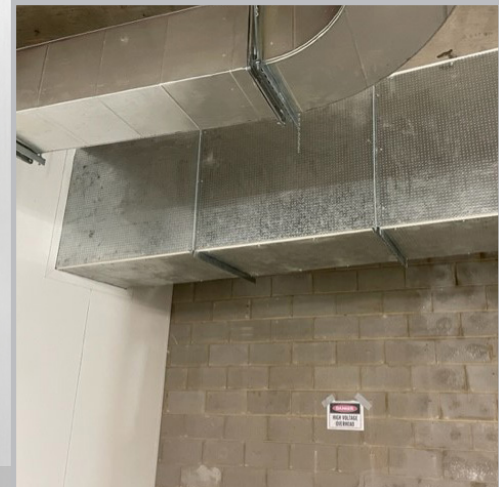
TECHNICAL DRAWING



Durasub cable duct enclosure provides fire resistance as part of partition, ceiling and duct system for up to 4 hours fire protection.

Providing fire protection inside and out and tested BS 476: Part 20 1987, in the event of a fire system can protect essential services such as:

- Data Cables
- Sprinkler Pumps
- Emergency Lighting
- Fire Alarms



DURASUB CABLE DUCT ENCLOSURE



FEATURES

- 2, 3 and 4 sided structures
- Supporting drop rod systems
- FRL 120/120/120
- Corrosion resistant
- Moisture resistant
- Angle frame
- Demountable
- Access panels
- Various Sizes

SIZES

- Max – 3000mm wide x 500mm high



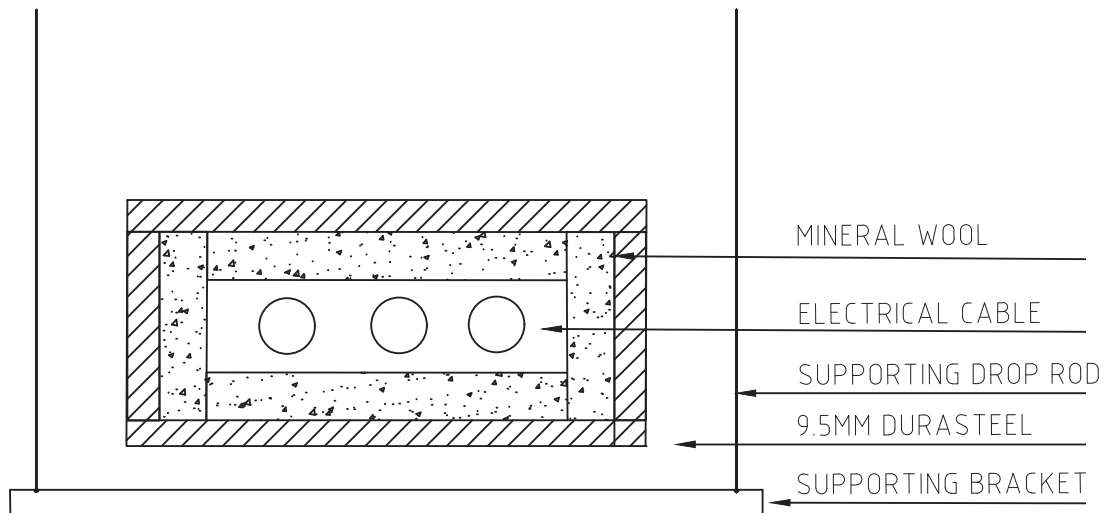
WE CAN INSTALL AND CERTIFY



DOORS CAN BE SHIPPED AUSTRALIA-WIDE



TECHNICAL
DRAWING



DUCT ENCLOSURE



Durasub Cable box enclosure consists of blast and fire rated Durasteel panels.

Bolted to the floor the panels provide protection of a Spark or blast coming from the cable joins within.

Approved in the Power and Energy sector, the cable box provides long-life protection for equipment and facilities.



DURASUB CABLE BOX ENCLOSURE



FEATURES

- Fire rated Durasteel panels
- FRL -/120/-
- Corrosion resistant
- Moisture resistant
- Angle frame
- Pre-made
- Painted or Powder-coated

SIZES

- Made to custom size

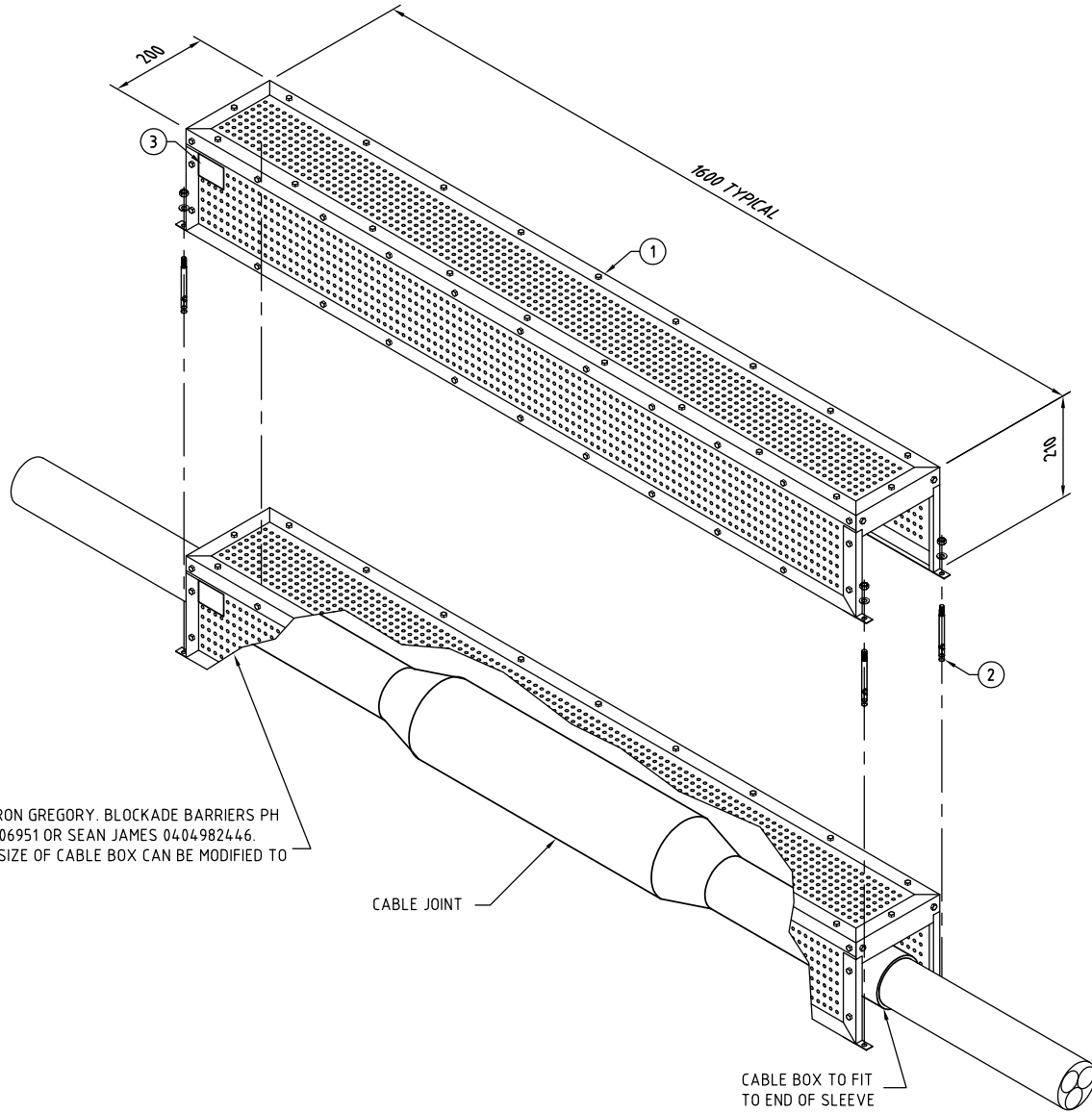


WE CAN INSTALL AND CERTIFY



DOORS CAN BE SHIPPED AUSTRALIA-WIDE

TECHNICAL
DRAWING



CAMERON GREGORY, BLOCKADE BARRIERS PH
0402206951 OR SEAN JAMES 0404982446.
NOTE SIZE OF CABLE BOX CAN BE MODIFIED TO
SUIT.

CABLE JOINT

CABLE BOX TO FIT
TO END OF SLEEVE

1	CABLE JOINT COVER - DURASTEEL 4 Hr FIRE RATED, 2 BAR BLAST PROOF
2	CONCRETE FASTENERS TO SUIT
3	BLOCKADE - TYPE TEST TAG



Durasub Acces Hatches are a fire performace load bearing and non loadbearing access floor panel. Protected with Durasteel boards when exposed from fire above and below.



DURASUB ACCESS HATCHES



FEATURES

- Fire rated Durasteel panels
- FRL 120/120/120
- Corrosion resistant
- Moisture resistant
- Angle frame
- Pre-made
- Impact Resistant
- Powder-coated.
- Various Panels sizes
- Multiple Panel Assemble
- Load bearing 80N/mm2

SIZES

- Various Sizes



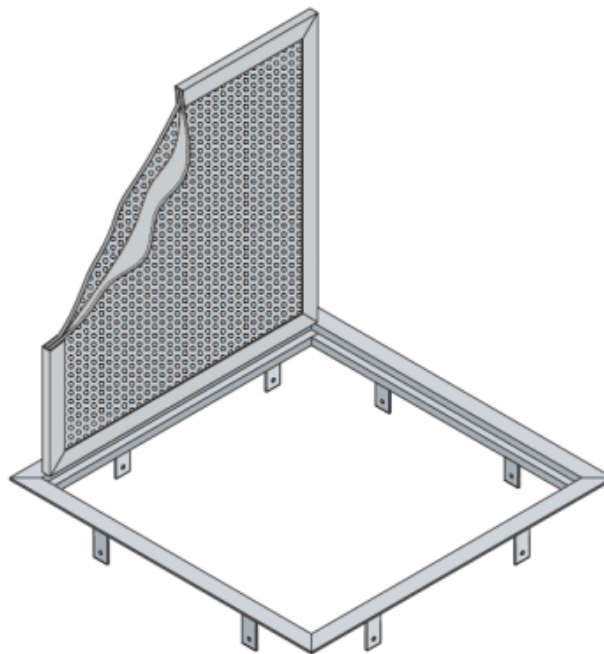
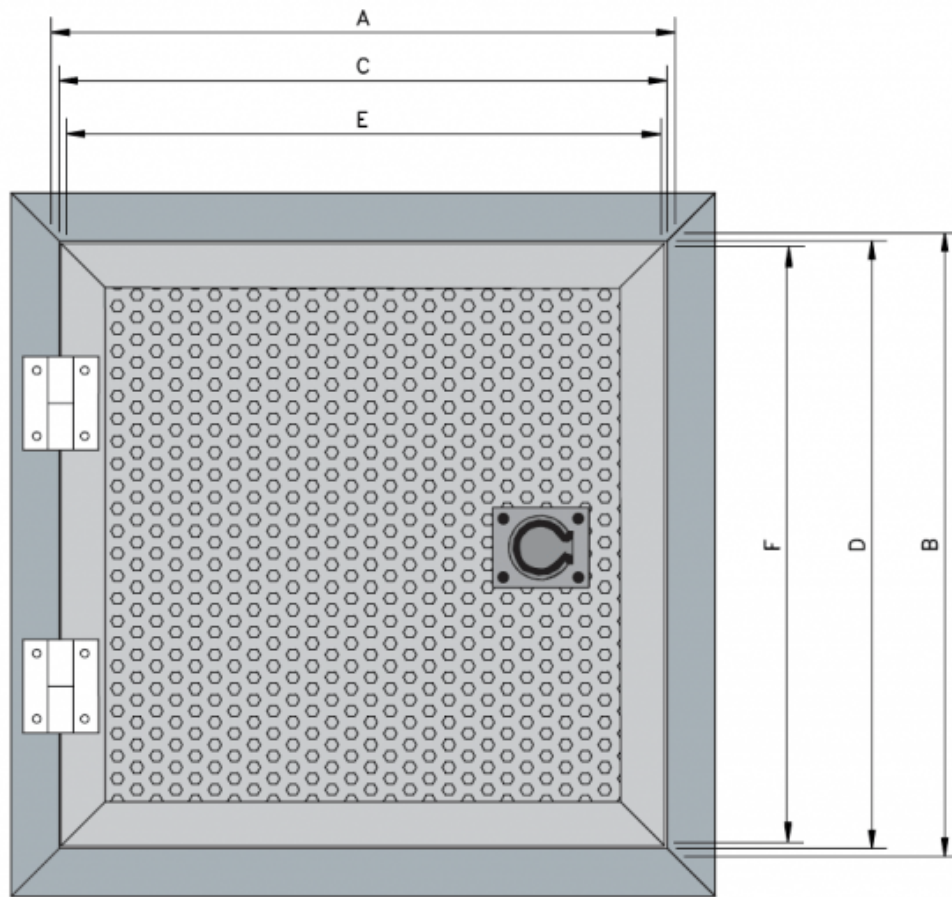
WE CAN INSTALL AND CERTIFY



DOORS CAN BE SHIPPED AUSTRALIA-WIDE



TECHNICAL
DRAWING





Durasteel Blast walls are a composite panel of fibre reinforced cement mechanically bonded to punched steel sheet on both outer surface.

Blast resistant and tested from .3 to 2 bar over pressure and resistant to Hydrocarbon fires.

This single or double skin 9.5 mm sheet can be constructed up to 15m high in terms of AS 1530.4 – 2005



DURASUB BLAST WALLS



FEATURES

- Provides up to 4 hours protection.
- Engineered for fast-track construction
- Blast resistant
- Impact resistant to 4000J
- Maintenance free
- Moisture resistant
- Light weight slimline construction
- Suitable for retro installation
- Demountable

SIZES

- Up to 15m in height



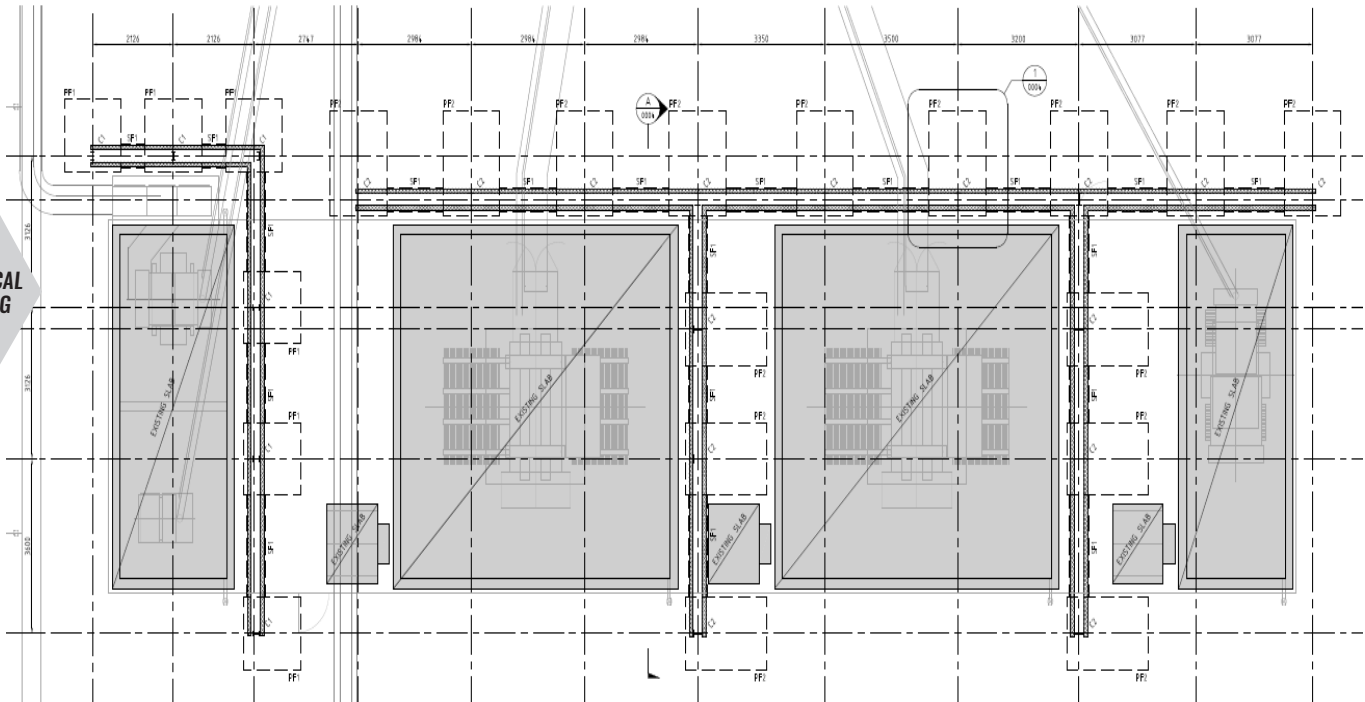
WE CAN INSTALL AND CERTIFY




DOORS CAN BE SHIPPED AUSTRALIA-WIDE





TECHNICAL
DRAWING



BLOCKADE BARRIERS

 29 Jarrah Drive, Braeside VIC 3195

 Victoria 1300 800 956 | NSW 1300 878 949

 sales@blockadebarriers.com.au

www.blockadebarriers.com.au

